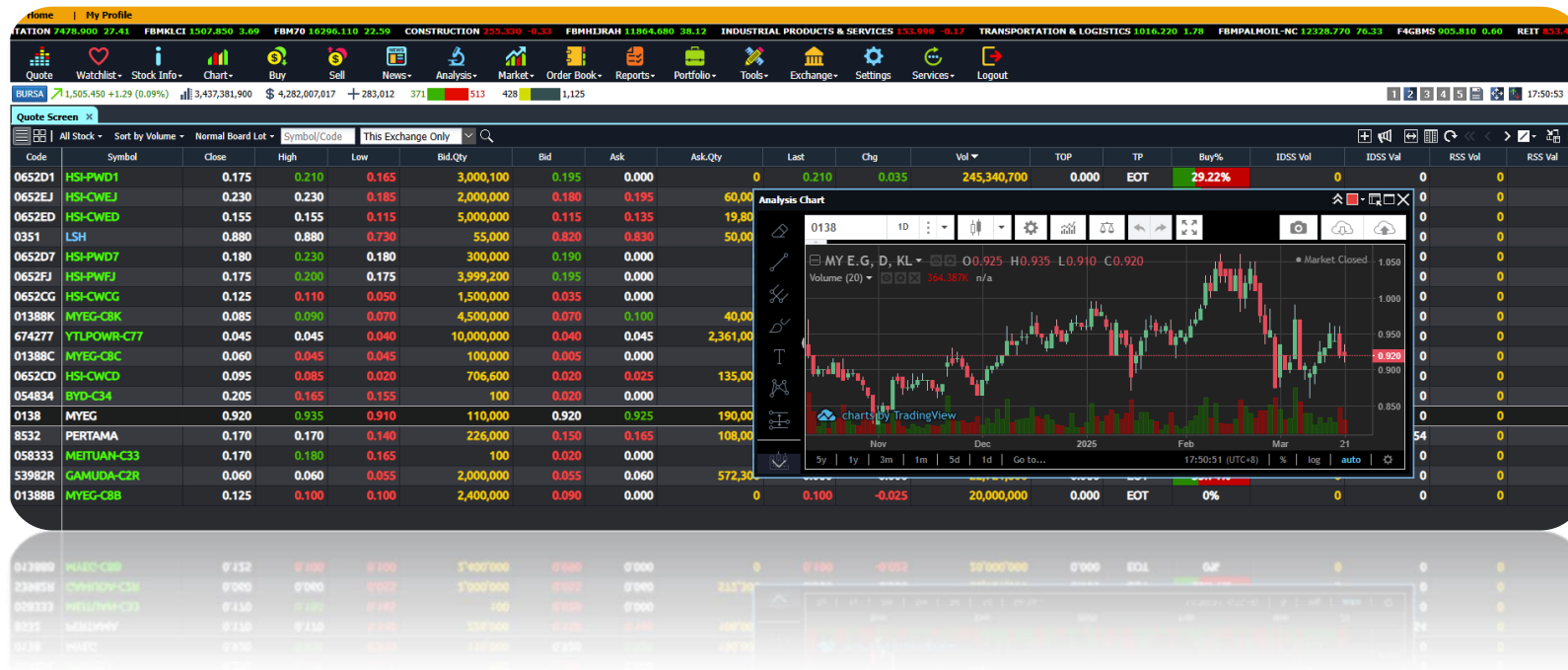




# APEXTRADE USER GUIDE

[www.apextrade.com](http://www.apextrade.com)



# TABLE OF CONTENT

[HOW TO LOGIN](#)

[QUOTE SCREEN](#)

[WATCHLIST](#)

[CREATE WATCHLIST](#)

[ADD ON STOCKS INTO WATCHLIST](#)

[VIEW WATCHLIST](#)

[DELETE WATCHLIST](#)

[RENAME WATCHLIST](#)

[STOCK INFO](#)

[MARKET DEPTH](#)

[STOCK INFO/TRACKER](#)

[HISTORICAL DATA](#)

[INTRADAY CHART](#)

[ANALYSIS CHART](#)

[ORDER PAD SUMMARY](#)

[HOW TO BUY](#)

[HOW TO SELL](#)

[ORDER STATUS](#)

[ORDER HISTORY](#)

[ORDER DETAILS](#)

[ORDER LOG](#)

[NEWS](#)

[DIVIDENDS INFO](#)

[WARRANTS INFO](#)

[MARKET SUMMARY](#)

[INDICES](#)

[SCOREBOARD](#)

[CLIENT SUMMARY](#)

[E-STATEMENT](#)

[EQUITIES PORTFOLIO](#)

[REALISED GAIN/LOSS](#)

[BREAKEVEN CALCULATOR](#)

[EXCHANGE](#)

[SETTINGS](#)

[E-SETTLEMENT](#)

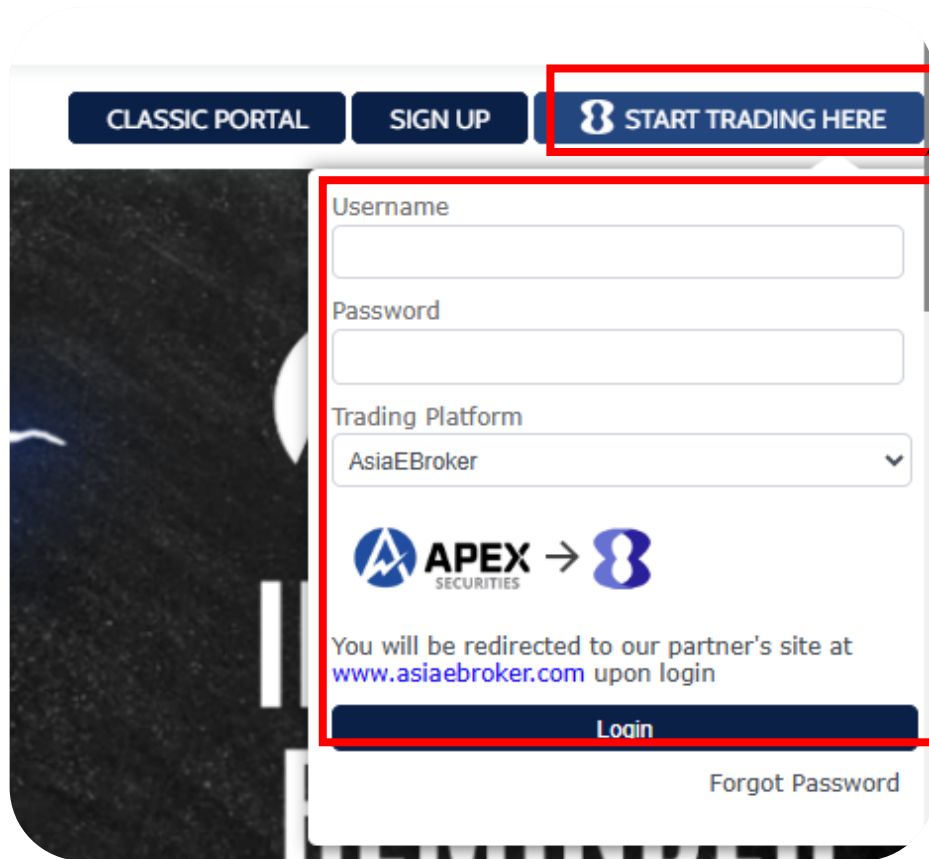
[CHANGE PASSWORD](#)

[CHANGE PIN](#)

[FORGOT PIN](#)



# HOW TO LOGIN





CLASSIC PORTAL SIGN UP **START TRADING HERE**

Username

Password

Trading Platform  
AsiaEBroker

You will be redirected to our partner's site at [www.asiaebroker.com](http://www.asiaebroker.com) upon login

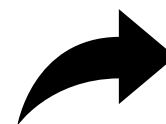
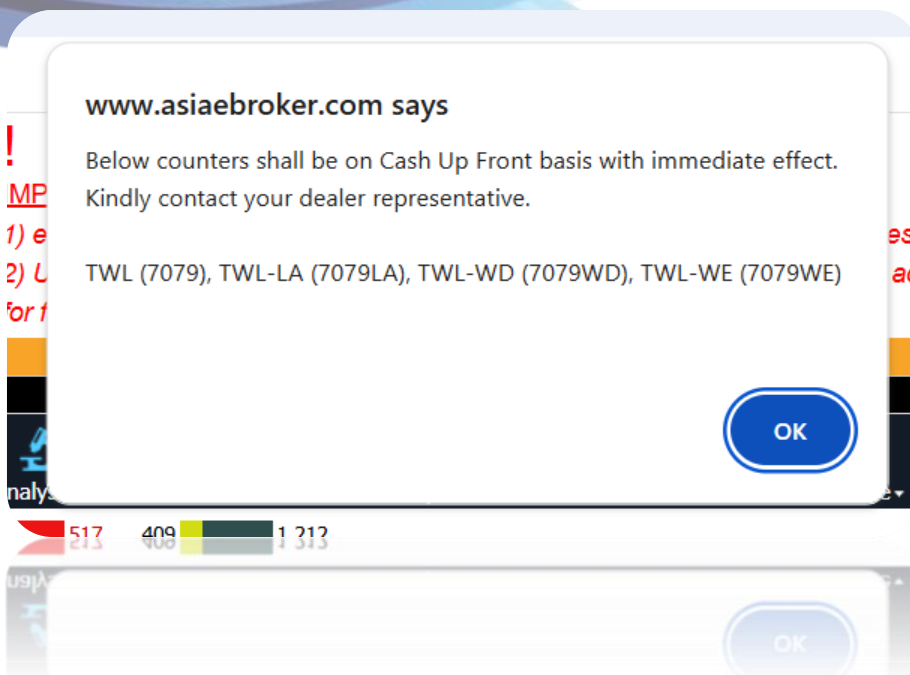
**Login**

[Forgot Password](#)

Click "START TRADING HERE" to login

Fill in your Username & Password and click "Login"





Click “OK” to proceed to the Quote Screen.



This pop-up provides information about the stocks classified as Cash Up Front.

You can only buy according to the funds available in your account. If you want to purchase more, you need to transfer additional cash.



# QUOTE SCREEN

**IMPORTANT ANNOUNCEMENT!**

1) e-Invoices are available upon request. Kindly click [HERE](#) to fill in the request form and submit to us.  
 2) Update your personal information with your remisier to keep your account active. Contact us at 03-7890 8811 for further assistance.

Home | My Profile

Summary: 2025-03-24 14:45:01 FA40 10742.010 -30.82 F4GBM 910.930 -1.92 FBMAACE 4784.450 -40.19 FBMT100 11042.600 -18.78 FINANCIAL SERVICES 18408.580 -31.25 FBMMSCAP 18885.690 -148.30 TELECOMMUNICATIONS & MEDIA 468.880 -0.27 FBMAPHYR 17436.400 64.60 FBMFLG 17795.120 -8

Quote Watchlist Stock Info Chart Buy Sell News Analysis Market Order Book Reports Portfolio Tools Exchange Settings Services Logout

BURSA 1,507,180 +1.73 (0.11%) 2,030,357,900 \$ 1,047,880,560 +116,233 239 545 424 1,218

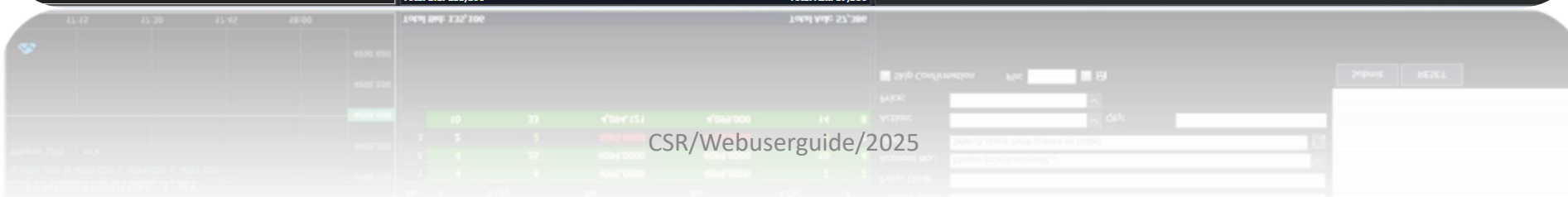
Code	Symbol	Close	High	Low	Bid Qty	Bid	Ask	Ask Qty	Last	Chg	Vol	TOP	TP	Buy%	IDSS Vol	IDSS Val	RSS Vol	RSS Val	PDT Vol	PDT Val
0652D1	HSI-PWD1	0.210	0.205	0.185	10.29M	0.190	0.195	4,451,500	0.195	-0.015	188,647,200	0.200	CNT2	28.58%	0	0	0	0	0	0
0652CY	HSI-CWCY	0.205	0.195	0.175	12,000,000	0.190	0.190	12,360,200	0.190	-0.015	183,879,700	0.000	CNT2	25.87%	0	0	0	0	0	0
0652EJ	HSI-CWEJ	0.185	0.195	0.175	4,876,400	0.185	0.190	5,458,200	0.185	0.000	161,258,600	0.185	CNT2	38.25%	0	0	0	0	0	0
0652D7	HSI-PWD7	0.230	0.220	0.205	12,000,000	0.210	0.215	12,00M	0.210	-0.020	146,324,900	0.000	CNT2	23.59%	0	0	0	0	0	0
0652FJ	HSI-PWFJ	0.200	0.200	0.190	8,700,200	0.190	0.195	4,700,000	0.195	-0.005	91,344,900	0.000	CNT2	16.68%	0	0	0	0	0	0
0652ED	HSI-CWED	0.125	0.130	0.110	17.35M	0.115	0.120	13.41M	0.120	-0.005	67,972,500	0.115	CNT2	22.76%	0	0	0	0	0	0
0652CM	HSI-CWCM	0.195	0.215	0.175	1,577,000	0.190	0.195	2,948,600	0.195	0.000	46,368,300	0.185	CNT2	67.23%	0	0	0	0	0	0
0652D5	HSI-PWD5	0.115	0.110	0.095	14.30M	0.100	0.105	14.50M	0.105	-0.010	42,466,800	0.000	CNT2	23.42%	0	0	0	0	0	0
674277	YTLPOWER-C77	0.045	0.045	0.035	11.79M	0.035	0.040	754,400	0.040	-0.005	39,237,500	0.000	CNT2	27.63%	0	0	0	0	0	0
0346	SALIRAN	0.255	0.265	0.235	4,295,900	0.235	0.240	1,678,700	0.240	-0.015	36,123,900	0.240	CNT2	58.79%	0	0	0	0	0	0
058333	METUAN-C33	0.170	0.150	0.140	909,800	0.145	0.150	304,200	0.150	-0.020	28,186,400	0.000	CNT2	29.77%	0	0	0	0	0	0
8532	PERTAMA	0.160	0.180	0.155	1,502,100	0.160	0.165	50,000	0.165	0.005	23,316,400	0.165	CNT2	42.9%	1,108,200	191,035	0	0	0	0
0652CA	HSI-CWCA	0.030	0.025	0.015	4,050,200	0.015	0.025	1,752,700	0.020	-0.010	22,239,400	0.000	CNT2	47.53%	0	0	0	0	0	0
0193	KAB	0.325	0.325	0.320	2,144,500	0.320	0.325	326,000	0.325	0.000	17,912,800	0.000	CNT2	96.19%	60,000	19,500	0	0	0	0
054834	BYD-C34	0.155	0.165	0.155	681,100	0.165	0.170	852,900	0.165	0.010	16,140,000	0.000	CNT2	36.06%	0	0	0	0	0	0



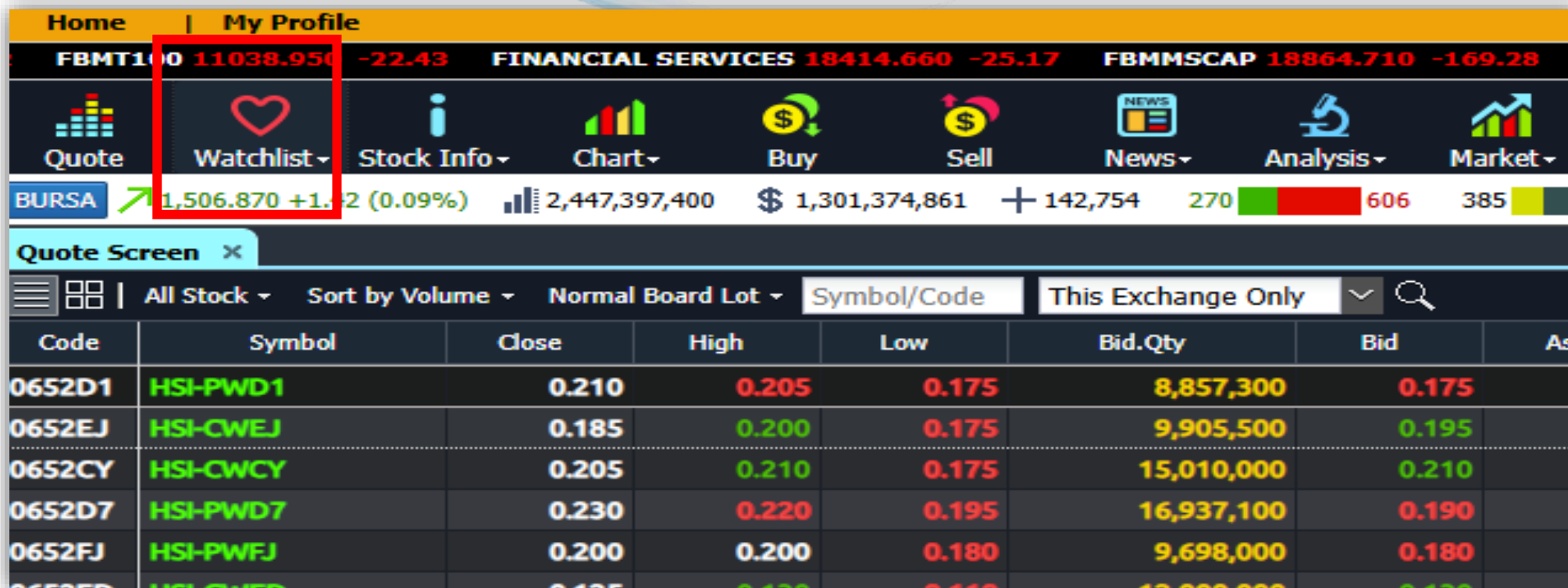
No.	#	B.Qty	Bid	Ask	A.Qty	#
1	4	6	4095.0000	4098.0000	2	2
2	4	25	4094.0000	4099.0000	10	4
3	2	2	4093.0000	4100.0000	2	2
		10	4,094.121	4,099.000	14	8

Total Bid: 135,106      Total Ask: 57,386

Trading Limit:	<input type="text"/>	Please select a symbol
Forex Limit:	<input type="text"/>	
Account No.:	<input type="text" value="Please select account..."/>	
Stock:	<input type="text" value="Search stock here (name or code)"/>	
Action:	<input type="text"/> Qty: <input type="text"/>	
Price:	<input type="text"/>	
<input type="checkbox"/> Skip Confirmation    Pin: <input type="text"/>		<input type="button" value="Submit"/> <input type="button" value="RESET"/>



# WATCHLIST



Home | My Profile

FBMT100 11038.950 -22.43 FINANCIAL SERVICES 18414.660 -25.17 FBMMSCAP 18864.710 -169.28

Quote Watchlist Stock Info Chart Buy Sell News Analysis Market

BURSA 1,506.870 +1.42 (0.09%) 2,447,397,400 \$ 1,301,374,861 + 142,754 270 606 385

Quote Screen x

All Stock Sort by Volume Normal Board Lot Symbol/Code This Exchange Only

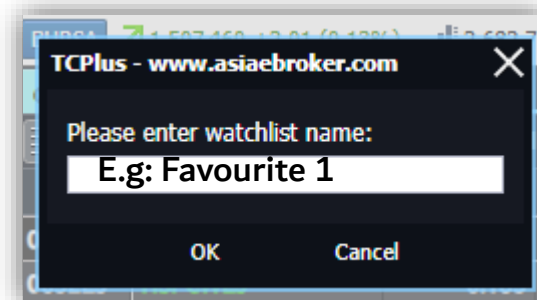
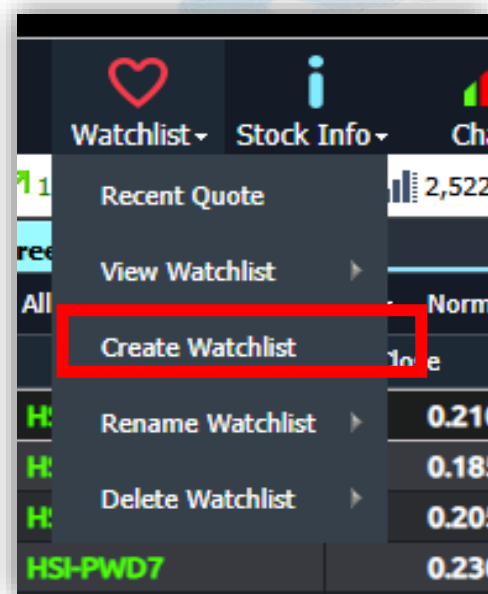
Code	Symbol	Close	High	Low	Bid Qty	Bid	Ask
0652D1	HSI-PWD1	0.210	0.205	0.175	8,857,300	0.175	
0652EJ	HSI-CWEJ	0.185	0.200	0.175	9,905,500	0.195	
0652CY	HSI-CWCY	0.205	0.210	0.175	15,010,000	0.210	
0652D7	HSI-PWD7	0.230	0.220	0.195	16,937,100	0.190	
0652FJ	HSI-PWFJ	0.200	0.200	0.180	9,698,000	0.180	
0652ED	HSI-CWED	0.135	0.130	0.110	12,000,000	0.130	



A watchlist is a list of stocks that traders want to monitor for price changes and trends. It helps you easily track price changes and trends of the stocks you're interested in.



# CREATE WATCHLIST



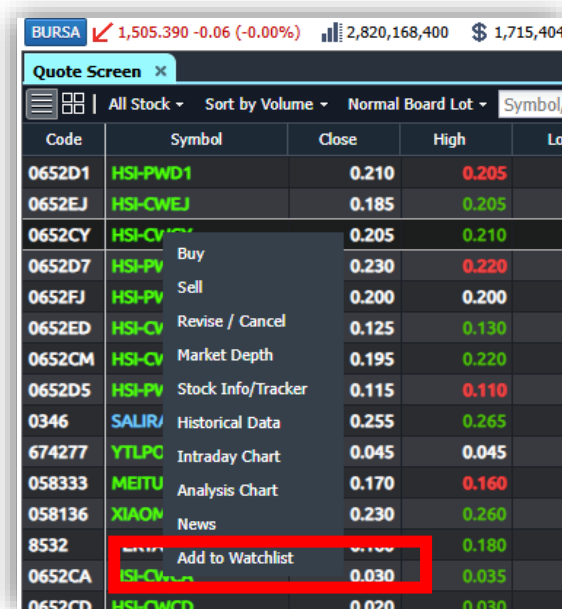
1) Select "Create Watchlist"

2) Enter title for your watchlist and click "OK"

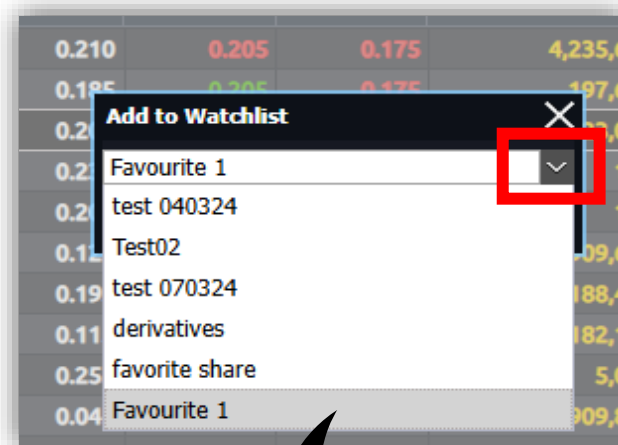
3) Successful message prompted



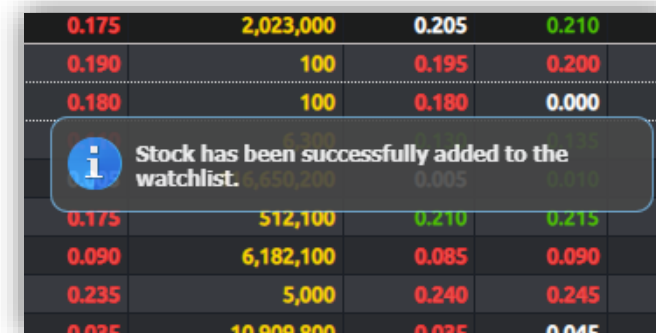
# ADD ON STOCKS INTO WATCHLIST



Code	Symbol	Close	High	Low
0652D1	HSI-PWD1	0.210	0.205	
0652EJ	HSI-CWEJ	0.185	0.205	
0652CY	HSI-CV	0.205	0.210	
0652D7	HSI-PV Buy	0.230	0.220	
0652FJ	HSI-PV Sell	0.200	0.200	
0652ED	HSI-CV Revise / Cancel	0.125	0.130	
0652CM	HSI-CV Market Depth	0.195	0.220	
0652D5	HSI-PV Stock Info/Tracker	0.115	0.110	
0346	SALIR Historical Data	0.255	0.265	
674277	YTLPQ Intraday Chart	0.045	0.045	
058333	METU Analysis Chart	0.170	0.160	
058136	XIAOM News	0.230	0.260	
8532	HSI-CV Add to Watchlist	0.180	0.180	
0652CA	HSI-CV	0.030	0.035	
0652CD	HSI-CV	0.020	0.030	



Code	Symbol	Close	High	Low
0.210		0.205	0.175	4,235,6
0.185		0.205	0.175	197,6
0.2				0.0
0.2				1
0.2				1
0.1				09,6
0.19				188,4
0.11				182,1
0.25				5,0
0.04				09,8



Code	Symbol	Close	High	Low
0.175		2,023,000	0.205	0.210
0.190		100	0.195	0.200
0.180		100	0.180	0.000
0.175		512,100	0.210	0.215
0.090		6,182,100	0.085	0.090
0.235		5,000	0.240	0.245
0.035		10,909,800	0.035	0.045

1) Right-click on the stock you want to add to your watchlist.

2) Select “Add to Watchlist”

3) If you have multiple watchlists, click the dropdown arrow to choose one.

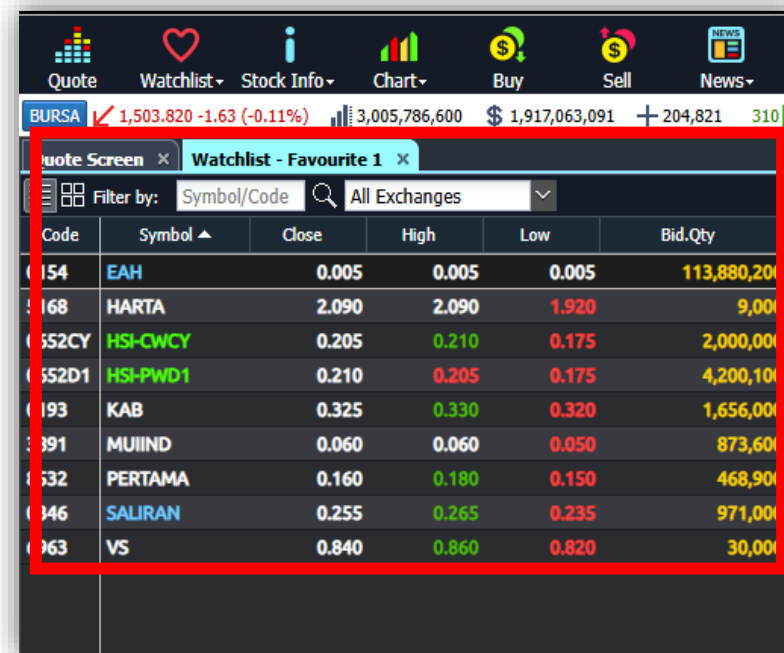
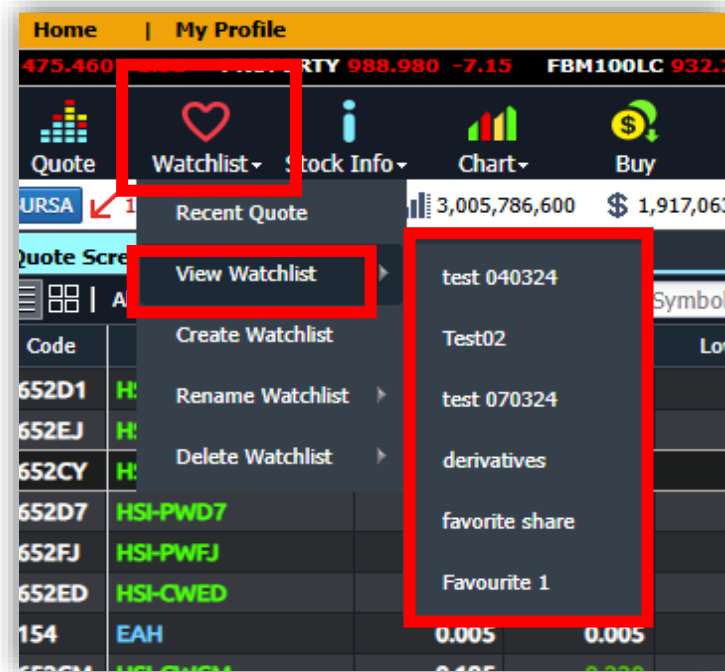
4) Click “Add”

5) Successful message prompted





# VIEW WATCHLIST



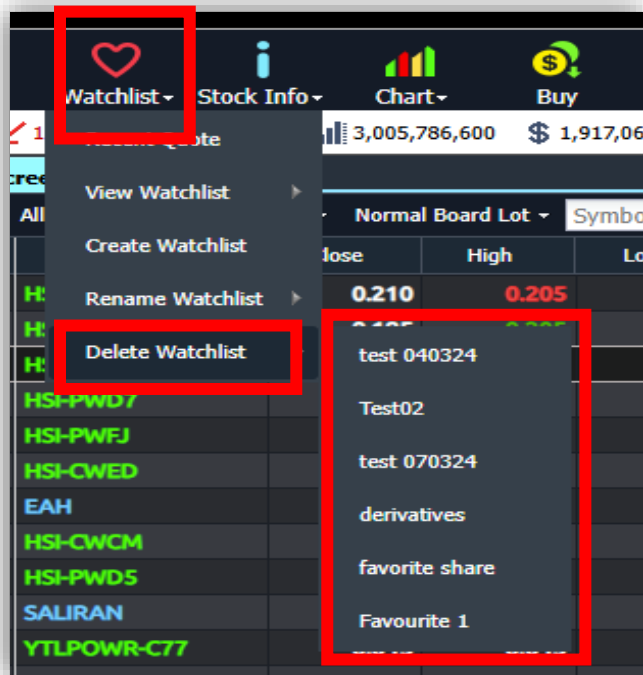
- 1) Select "Watchlist"
- 2) Select "View Watchlist"
- 3) Select your preferred Watchlist to VIEW



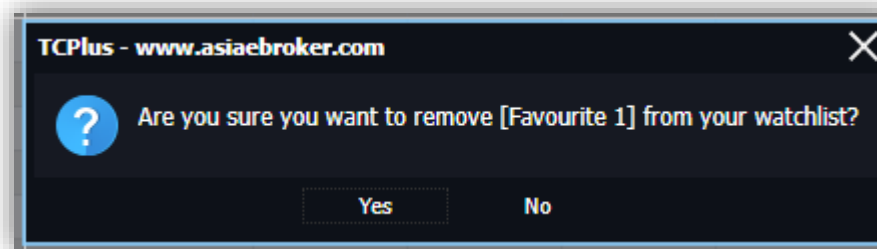
- 4) Watchlist displayed



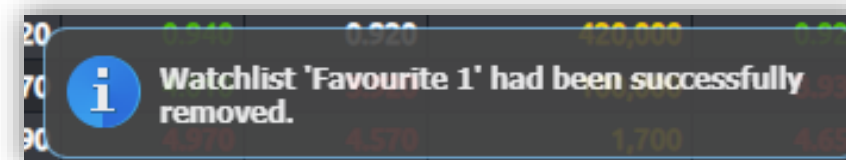
# DELETE WATCHLIST



- 1) Select "Watchlist"
- 2) Select "Delete Watchlist"
- 3) Select your preferred Watchlist to DELETE

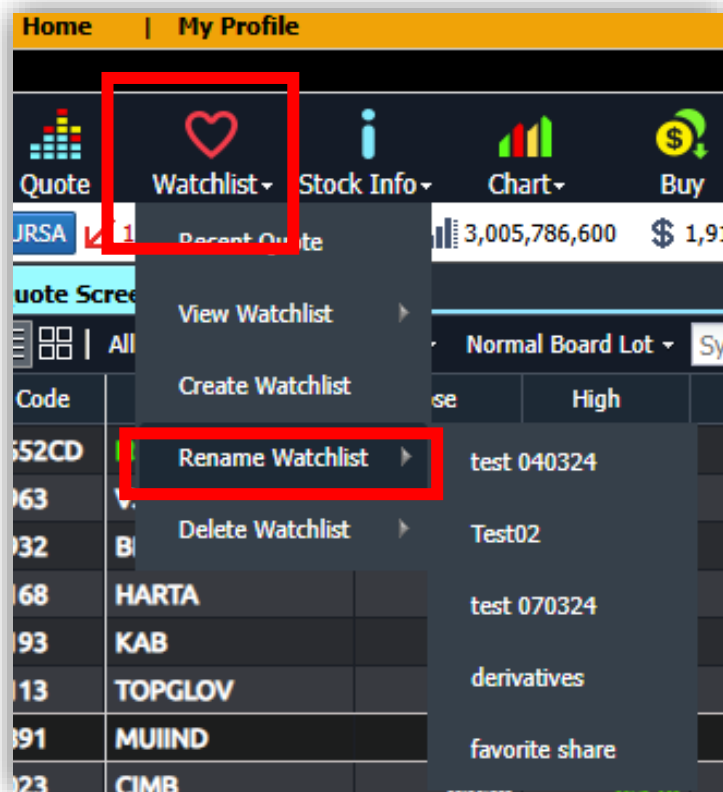


4) Select "Yes" to DELETE

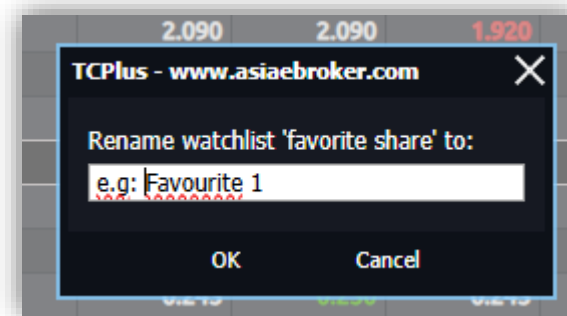


5) Successful message prompted

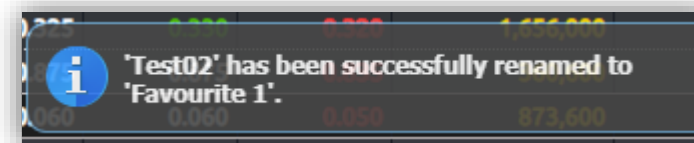
# RENAME WATCHLIST



- 1) Select "Watchlist"
- 2) Select "Rename Watchlist"
- 3) Select your preferred Watchlist to RENAME

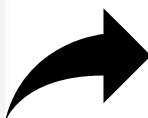


4) Rename your watchlist & click "OK"



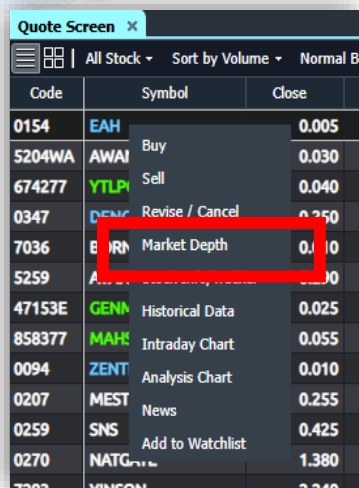
5) Successful message prompted

# STOCK INFO

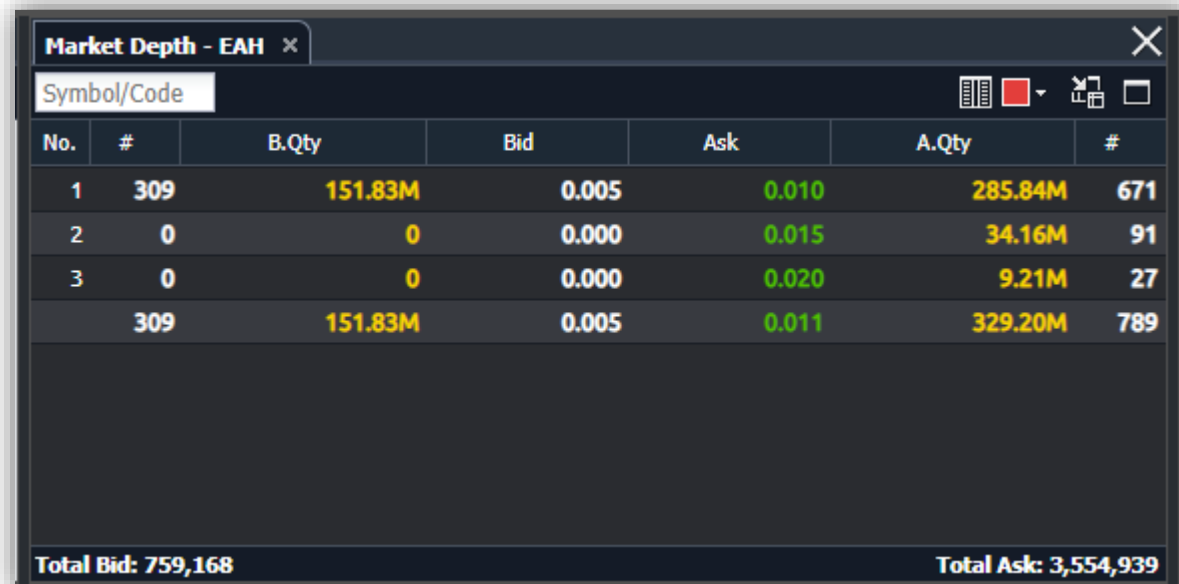


- 1) Click “Stock Info”
- 2) It will show 3 pieces of information that you can examine in detail.

# MARKET DEPTH



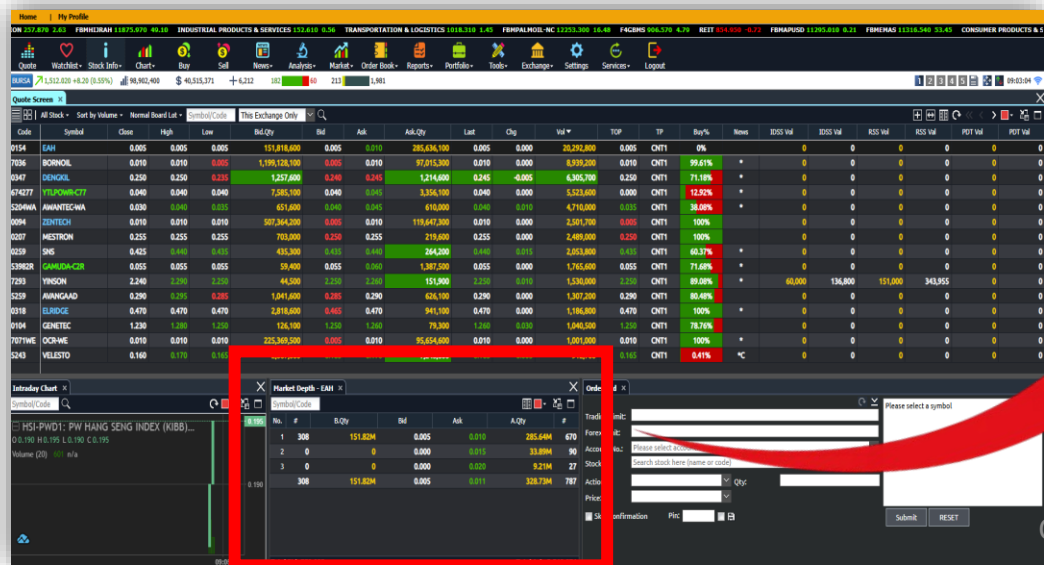
1) Right-click on the stock you wish to view and select "Market Depth"



No.	#	B.Qty	Bid	Ask	A.Qty	#	
1	309	151.83M	0.005	0.010	285.84M	671	
2	0	0	0.000	0.015	34.16M	91	
3	0	0	0.000	0.020	9.21M	27	
		309	151.83M	0.005	0.011	329.20M	789

Total Bid: 759,168      Total Ask: 3,554,939

2) It will be displayed as below.



By default, it is set to 3 tiers. To access more, please subscribe by emailing us at [apextrade@apexsecurities.com.my](mailto:apextrade@apexsecurities.com.my)



# STOCK INFO/TRACKER

Quote Screen x

All Stock Sort by Volume Normal B

Code	Symbol	Close
0154	EAH	0.005
5204WA	AWAI Buy	0.030
674277	YTLP Sell	0.040
0347	DENC Revise / Cancel	0.250
7036	BOPN Market Depth	0.010
5259	EAH Stock Info/Tracker	0.005
47153E	GENM Historical Data	0.025
858377	MAH Intraday Chart	0.055
0094	ZENT Analysis Chart	0.010
0207	MEST News	0.255
0259	SNS Add to Watchlist	0.425
0270	NATG	1.380



- 1) Right-click on the stock you wish to view and select "Stock info/Tracker"



After opening the stock info, you can search for other stocks from the search column



# HISTORICAL DATA

Quote Screen x

All Stock v Sort by Volume v Normal B

Code	Symbol		Close
0154	EAH		0.005
5204WA	AWAI	Buy	0.030
674277	YTLP	Sell	0.040
0347	DENC	Revise / Cancel	0.250
7036	BORN	Market Depth	0.010
5259	AVAN	Stock Info/Tracker	0.290
47153E	CENM	Historical Data	0.25
858377	NALM	Analysis Chart	0.55
0094	ZENT	Analysis Chart	0.010
0207	MEST	News	0.255
0259	SNS	Add to Watchlist	0.425
0270	NATG		1.380
7202	VINSON		2.240



Quote Screen x Historical Data - HSI-PWD7 x

BURSA 1,515.410 +11.59 (0.77%) 847,491,700 \$ 381,607,177 + 44,931 362 232 355

Periodicity	Load	High	Low	Close	Vol
DAILY	50				
1MIN	50				
15MIN	100	0.220	0.190	0.200	1,673,344
30MIN	200	0.230	0.180	0.230	610,051
60MIN	300	0.190	0.150	0.180	237,449
DAILY	500	0.165	0.155	0.160	625,018
				0.200	78,273
				0.250	56,241
				0.255	17,305
				0.275	17,305
				0.250	17,305
				0.270	17,305
				0.240	65,951
				0.280	65,951
				0.235	65,951
				0.275	65,951
				0.255	89,562
				0.295	89,562
				0.245	89,562
				0.250	89,562
				0.230	67,556
				0.255	67,556
				0.210	67,556
				0.255	67,556
				0.235	399,269
				0.235	399,269
				0.205	399,269
				0.220	399,269
				0.245	43,574
				0.245	43,574
				0.215	43,574
				0.220	43,574
				0.325	1,917
				0.330	1,917
				0.285	1,917
				0.285	1,917
				0.380	6,484
				0.400	6,484
				0.350	6,484
				0.355	6,484
				0.340	6,510
				0.365	6,510
				0.315	6,510
				0.350	6,510
				0.370	41,000
				0.310	41,000
				0.370	41,000

1) Right-click on the stock you wish to view and select "Historical Data"

2) You can choose to view data in 1min, 15min, 30min, etc., and load up to 500 data points



# INTRADAY CHART

1) Right-click on the stock you wish to view and select "Intraday Chart"

Code	Symbol	Close
0154	EAH	0.005
5204WA	AWAI Buy	0.030
674277	YTLP Sell	0.040
0347	DENC Revise / Cancel	0.250
7036	BORN Market Depth	0.010
5259	AVAN Stock Info/Tracker	0.290
47153E	GENN Historical Data	0.025
858377	IAH Intraday Chart	0.55
0094	Analysis Chart	10
0207	MEST News	0.255
0259	SNS Add to Watchlist	0.425
0270	NATG	1.380

2) It will be displayed below.



Quote Screen

Code	Symbol	Close	High	Low	Ind. Qty	bid	ask	ask-qty	last	chg	Vol	TP	Buy%	News	IDSS Vol	IDSS Val	RSS Vol	RSS Val	POF Vol	POF Val
065200	HSI-CWEO	0.170	0.160	0.140	19,206,800	0.140	0.145	12,000,000	0.145	-0.025	144,158,000	0.000	CHN1	17.69%	0	0	0	0	0	0
065201	HSI-PWD1	0.175	0.210	0.195	14,148,100	0.205	0.210	5,164,000	0.210	0.015	136,407,900	0.000	CHN1	26.31%	0	0	0	0	0	0
065202	HSI-CWUJ	0.200	0.185	0.160	9,734,300	0.160	0.165	5,135,100	0.165	-0.035	81,133,000	0.000	CHN1	27.84%	0	0	0	0	0	0
065207	HSI-PWD7	0.200	0.235	0.210	20,020,000	0.230	0.235	12,261,000	0.235	0.035	54,238,800	0.000	CHN1	10.06%	0	0	0	0	0	0
06520Y	HSI-CWCY	0.210	0.190	0.160	12,616,900	0.160	0.165	12,155,000	0.165	-0.040	49,801,400	0.000	CHN1	20.74%	0	0	0	0	0	0
0347	DENKIL	0.250	0.250	0.225	464,100	0.230	0.235	2,531,200	0.230	-0.020	27,945,800	0.250	CHN1	43.1%	0	0	0	0	0	0
0652FM	HSI-PWFM	0.150	0.140	0.130	18,000,000	0.140	0.145	12,000,000	0.140	-0.010	24,500,500	0.000	CHN1	24.53%	0	0	0	0	0	0
0652CM	HSI-CWCM	0.215	0.195	0.160	1,837,000	0.155	0.160	2,793,000	0.160	-0.055	24,408,500	0.190	CHN1	56.67%	0	0	0	0	0	0
0154	EAH	0.005	0.005	0.005	154,643,600	0.005	0.010	283,853,100	0.005	0.000	23,292,800	0.005	CHN1	0%	0	0	0	0	0	0
5204WA	AWANTECWA	0.030	0.030	0.030	7,114,800	0.030	0.030	7,621,000	0.030	0.010	19,998,700	0.030	CHN1	64.32%	0	0	0	0	0	0
065200	HSI-CWEO	0.130	0.120	0.100	13,381,100	0.100	0.105	4,016,100	0.105	-0.025	19,561,900	0.120	CHN1	26.98%	0	0	0	0	0	0
065201	HSI-PWD1	0.180	0.215	0.190	4,760,000	0.205	0.210	4,700,100	0.205	0.025	18,400,400	0.000	CHN1	24.47%	0	0	0	0	0	0
7036	BORNKIL	0.010	0.010	0.005	1,363,960,300	0.005	0.010	89,980,800	0.005	-0.005	18,390,800	0.010	CHN1	99.81%	0	0	0	0	0	0
0193	KAB	0.330	0.330	0.330	2,062,900	0.330	0.330	523,000	0.330	0.000	18,094,000	0.000	CHN1	99.61%	0	26,400	0	0	0	0
058136	MAOMC-C36	0.255	0.230	0.220	3,708,200	0.215	0.220	215,400	0.220	-0.035	17,683,000	0.000	CHN1	27.21%	0	0	0	0	0	0

Market Depth - HSI-PWD1

No.	#	B.Qty	bid	ask	A.Qty
1	32	14,15M	0.205	0.210	42
2	25	9,25M	0.200	0.205	15
3	24	8,40M	0.195	0.200	12
81	31,86M	0.201	0.215	13,60M	49

Order Pad

BUY (Limit) 065201 / HSI-PWD1 @ 0.205  
 Indicative Exchange Rate HKD 1: HKD 1.000000  
 Trading Limits: HKD 3.00

Price: 0.205  
 Skip Confirmation PIP: [ ]

BUY RESET

CSR/Webuserguide/2025



After opening the Intraday Chart, you can search for other stocks from the search column





# ANALYSIS CHART

Code	Symbol	Close
0154	EAH	0.005
5204WA	AWAI Buy	0.030
674277	YTLP Sell	0.040
0347	DENC Revise / Cancel	0.250
7036	BORN Market Depth	0.010
5259	AVAN Stock Info/Tracker	0.290
47153E	GENM Historical Data	0.025
858377	MAH Intraday Chart	0.055
0094	ZEN Analysis Chart	0.010
0207	MES News	0.005
0259	SNS Add to Watchlist	0.425
0270	NATG	1.380



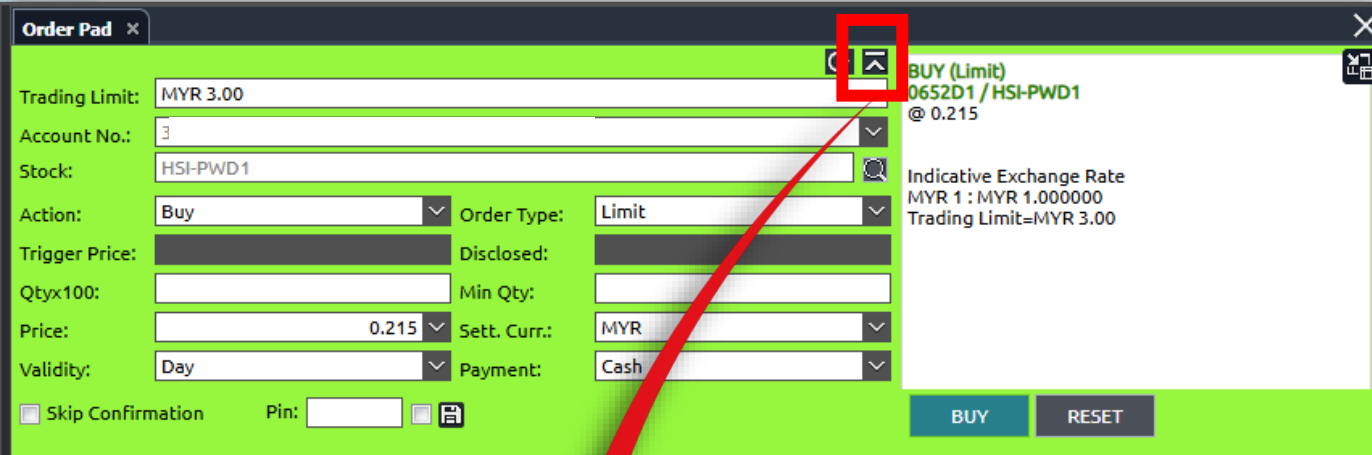
1) Right-click on the stock you wish to view and select “Analysis Chart”

2) You can customize it according to your preferences using the available toggle.



# ORDER PAD SUMMARY

- **TRADING LIMIT & ACC. NO:** Will be default.
- **STOCK:** Displayed based on the selected stock.
- **ACTION:** Change your action to **BUY** or **SELL**
- **QTY:** Multiplied by 100.  
E.g: If you key 20, you are actually buying 2000 units.
- **PRICE:** Enter the price of your choice.
- **VALIDITY:** Day is to queue for 1 day.  
: GTD is Good Till Date,  
que up to 30 days.
- **ORDER TYPE:** Always choose "limit".
- **MIN QTY: KINDLY LEAVE IT BLANK**
- **SETT CURRENCY and PAYMENT:** It's set to default, no changes needed.
- **PIN:** Enter your 6<sup>th</sup> digits pin number and click **BUY/SELL**



Order Pad x

Trading Limit: MYR 3.00

Account No.: 3

Stock: HSI-PWD1

Action: Buy Order Type: Limit

Trigger Price: Disclosed:

Qtyx100: Min Qty:

Price: 0.215 Sett. Curr.: MYR

Validity: Day Payment: Cash

Skip Confirmation Pin:

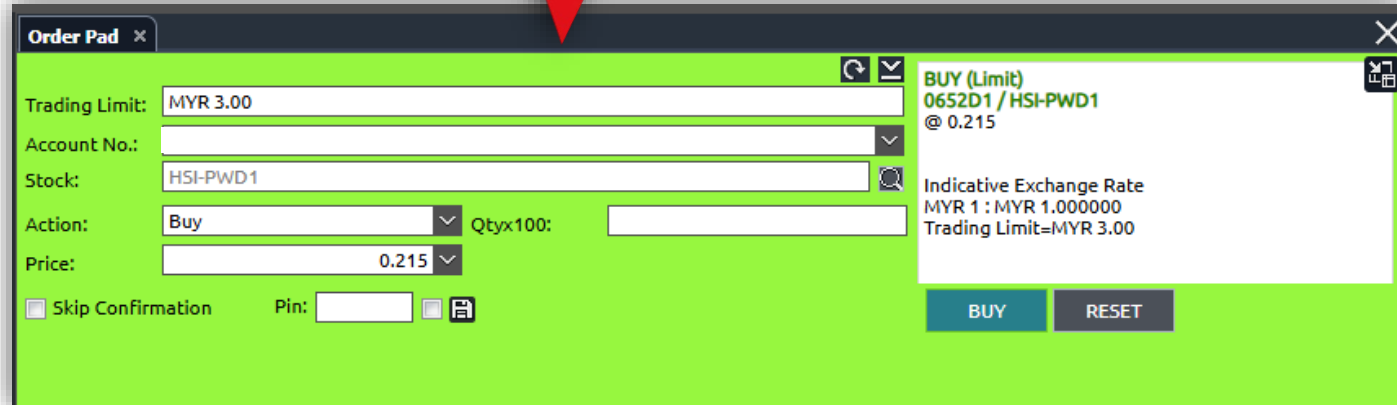
BUY RESET

BUY (Limit)  
0652D1 / HSI-PWD1  
@ 0.215

Indicative Exchange Rate  
MYR 1 : MYR 1.000000  
Trading Limit=MYR 3.00



Click the button to have a simplified view



Order Pad x

Trading Limit: MYR 3.00

Account No.:

Stock: HSI-PWD1

Action: Buy Qtyx100:

Price: 0.215

Skip Confirmation Pin:

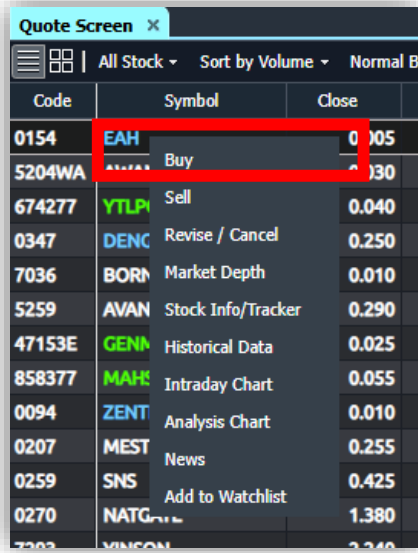
BUY RESET

BUY (Limit)  
0652D1 / HSI-PWD1  
@ 0.215

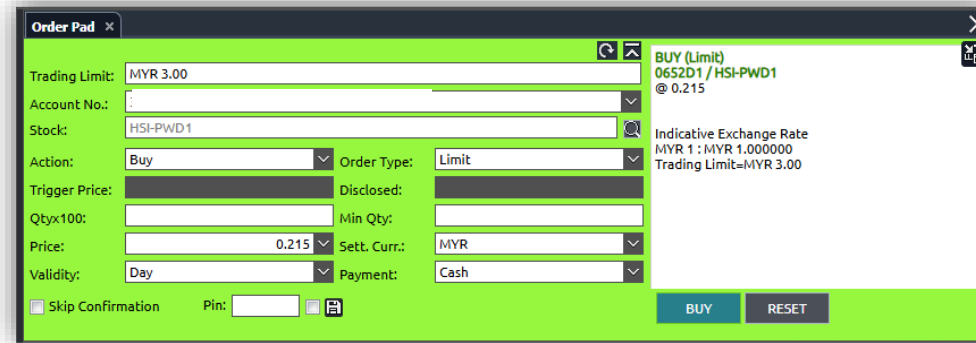
Indicative Exchange Rate  
MYR 1 : MYR 1.000000  
Trading Limit=MYR 3.00



# HOW TO BUY



Code	Symbol	Close
0154	EAH	0.005
5204WA	...	0.030
674277	YTLP	0.040
0347	DENC	0.250
7036	BORN	0.010
5259	AVAN	0.290
47153E	GENA	0.025
858377	MAK	0.055
0094	ZENT	0.010
0207	MEST	0.255
0259	SNS	0.425
0270	NATG	1.380



Order Pad

Trading Limit: MYR 3.00

Account No.: [Field]

Stock: HSI-PWD1

Action: Buy Order Type: Limit

Trigger Price: [Field] Disclosed: [Field]

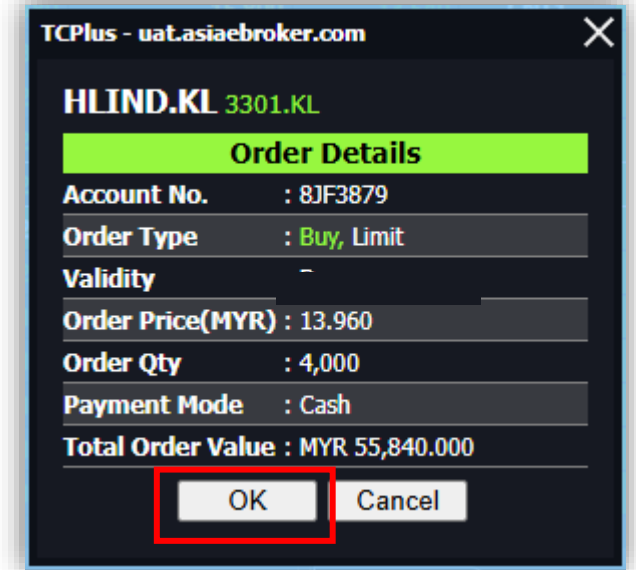
Qtyx100: [Field] Min Qty: [Field]

Price: 0.215 Sett. Curr.: MYR

Validity: Day Payment: Cash

Skip Confirmation Pin: [Field]

BUY RESET



TCPlus - uat.asiaebroker.com

HLIND.KL 3301.KL

**Order Details**

Account No. : 8JF3879

Order Type : Buy, Limit

Validity : -

Order Price(MYR) : 13.960

Order Qty : 4,000

Payment Mode : Cash

Total Order Value : MYR 55,840.000

OK Cancel

1) Right-click on the stock you wish to buy and select "BUY"

2) An order pad for you to place your order

3) Click "OK" to proceed.



# HOW TO SELL

Quote Screen

Code	Symbol	Close
0154	EAH	0.005
5204WA	Buy	0.730
674277	TLPI Sell	0.940
0347	DENC	0.250
7036	BORN	0.010
5259	AVAN	0.290
47153E	GENN	0.025
858377	MAH	0.055
0094	ZENT	0.010
0207	MEST	0.255
0259	SNS	0.425
0270	NATG	1.380

Order Pad

Trading Limit: MYR 3.00

Account No.: [Field]

Stock: HSI-CWEO

Action: Sell Qtyx100: [Field]

Price: 0.140

SELL (Limit)  
0652EO / HSI-CWEO  
@ 0.140

Indicative Exchange Rate  
MYR 1 : MYR 1.000000  
Trading Limit=MYR 3.00

Skip Confirmation Pin: [Field]

SELL RESET

TCPlus - uat.asiabroker.com

MYEG.KL 0138.KL

Order Details

Account No. [Field]

Order Type : Sell, Limit

Validity : Day

Order Price(MYR) : 0.940

Order Qty : 2,000

Payment Mode : Cash

Total Order Value : MYR 1,880.000

OK Cancel

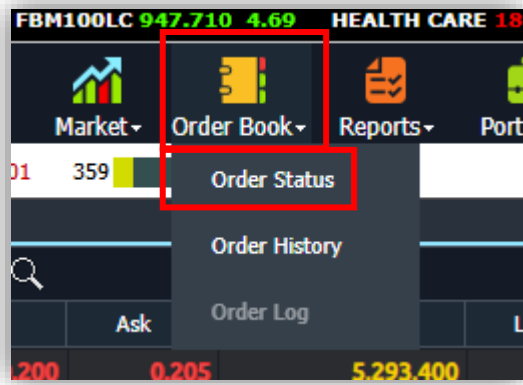
1) Right-click on the stock you wish to buy and select "SELL"

2) An order pad for you to place your order

3) Click "OK" to proceed.



# ORDER STATUS



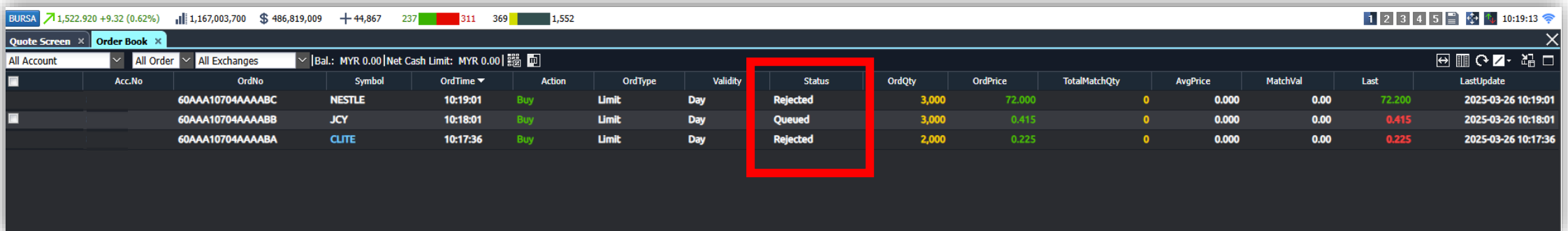
1) Click “Order Book” icon and select “Order Status”



There are several status that will be displayed.

- Filled – Order has been matched
- Queue – Order is now in the market
- Rejected – Order was unsuccessful
- Pending release – Order is waiting in the queue during market close.
- Canceled – Order has been canceled
- Replaced – New revise order has been successfully queue

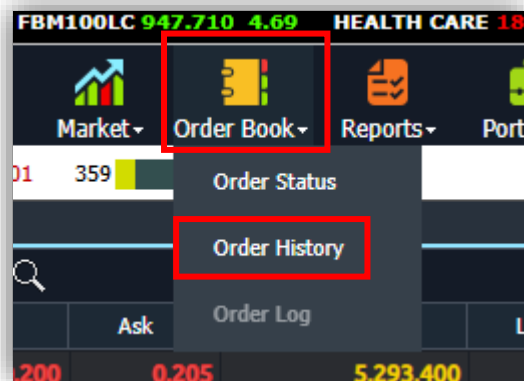
**\*\*\*Order status will only display active orders.**



Acc.No	OrdNo	Symbol	OrdTime	Action	OrdType	Validity	Status	OrdQty	OrdPrice	TotalMatchQty	AvgPrice	MatchVal	Last	LastUpdate
60AAA10704AAAABC		NESTLE	10:19:01	Buy	Limit	Day	Rejected	3,000	72.000	0	0.000	0.00	72.200	2025-03-26 10:19:01
60AAA10704AAAABB		JCY	10:18:01	Buy	Limit	Day	Queued	3,000	0.415	0	0.000	0.00	0.415	2025-03-26 10:18:01
60AAA10704AAAABA		CLITE	10:17:36	Buy	Limit	Day	Rejected	2,000	0.225	0	0.000	0.00	0.225	2025-03-26 10:17:36



# ORDER HISTORY



1) Click “Order Book” icon and select “Order History”



There are several status that will be displayed.

- Rejected – Order was unsuccessful
- Filled – Order that has been matched previous day.
- Canceled – Order has been canceled
- Expired – Order was not matched within the specified time frame and is no longer valid.

OrdDate	OrdTime	Acc.No	OrdNo	Symbol	Action	OrdType	Validity	Status	OrdQty	OrdPrice	TotalMatchQty	AvgPrice	MatchVal	SettCurr	SettMode
24-03-2025	09:38:15		60AAA10704AAAAAZ	MYEG	Sell	Limit	Day	Cancelled	2,000	0.970	0	0.000	0.00	MYR	CASH
24-03-2025	09:36:13		60AAA10704AAAAAY	MAYBANK	Buy	Limit	Day	Expired	5,000	10.800	0	0.000	0.00	MYR	CASH
22-01-2025	10:06:50		60AAA10704AAAAAX	JCY	Buy	Limit	Day	Expired	1,000	0.515	0	0.000	0.00	MYR	CASH
22-01-2025	10:05:49		60AAA10704AAAAAW	SNS	Buy	Limit	Day	Rejected	1,000	0.580	0	0.000	0.00	MYR	CASH
15-01-2025	09:44:04		60AAA10704AAAAAV	SNS	Buy	Limit	Day	Rejected	5,000	0.590	0	0.000	0.00	MYR	CASH
08-01-2025	10:51:59		60AAA10704AAAAAU	HSI-CWAM	Buy	Limit	Day	Rejected	5,000	0.005	0	0.000	0.00	MYR	CASH
08-01-2025	10:38:16		60AAA10704AAAAAT	MYEG	Buy	Limit	Day	Filled	4,000	0.960	4,000	0.960	3,840.00	MYR	CASH
08-01-2025	10:36:31		60AAA10704AAAAAS	DATA PRP	Buy	Limit	Day	Filled	1,000	0.145	1,000	0.145	145.00	MYR	CASH
08-01-2025	10:35:46		60AAA10704AAAAAR	99SMART-CB	Buy	Limit	Day	Rejected	1,000	0.080	0	0.000	0.00	MYR	CASH
27-12-2024	09:43:30		60AAA10704AAAAAQ	ZENTECH	Buy	Limit	Day	Rejected	1,000	0.010	0	0.000	0.00	MYR	CASH



# ORDER DETAILS

Quote Screen x Order Book x

All Account | All Order | All Exchanges | Bal.: MYR 0.00 | Net Cash Limit: MYR 0.00

	Acc.No	OrdNo	Symbol	OrdTime	Action	OrdType	Validity	Status	OrdQty	OrdPric
<input checked="" type="checkbox"/>	8	60AAA10704AAAABD	HLIND	12:32:01	Buy	Limit	Day	Pending Release	4,000	
<input type="checkbox"/>	8	60AAA10704AAAABC	NESTLE	10:19:01	Buy	Limit	Day	Rejected	00	
<input type="checkbox"/>	8	60AAA10704AAAABB	JCY	10:18:01	Buy	Limit	Day	Replaced	00	
<input type="checkbox"/>	8	60AAA10704AAAABA	CLITE	10:17:36	Buy	Limit	Day	Rejected	00	

Buy  
 Sell  
 Revise  
 Cancel  
 Market Depth  
 Stock Info/Tracker  
 Historical Data  
 Intraday Chart  
 Analysis Chart  
 Order Log  
Order Detail  
 News

1) Right click on the order status and select "Order details"

**Order Detail**

Stock	3301 / HLIND	Order No.	60AAA10704AAAABD
Account No.		Order Price	13.960
Action	Buy	Order Qty	4,000
Order Source	Internet retail	Matched Qty	0
Order Type	Limit	Matched Price	0.000
Validity	Day	Matched Value	0
Order Time	2025-03-26 12:32:01	Unmatched Qty	4,000
Order Status	Pending Release (PRL)	Canceled Qty	0
Disclosed Qty	0	Min Qty	0
Short Sell	-		
Remarks	[OMS] Order will be submitted next trading session		

Remarks will display the order details.



# ORDER LOG

Quote Screen x Order Book x

All Account | All Order | All Exchanges | Bal.: MYR 0.00 | Net Cash Limit: MYR 0.00

Acc.No	OrdNo	Symbol	OrdTime	Action	OrdType	Validity	Status	OrdQty	OrdPric
	60AAA10704AAAABD	HLIND	12:32:01	Buy	Limit	Day	Pending Release	4,000	
	60AAA10704AAAABC	NESTLE	10:19:01	Buy	Limit	Day	Rejected	00	
	60AAA10704AAAABB	JCY	10:18:01	Buy	Limit	Day	Replaced	00	
	60AAA10704AAAABA	CLITE	10:17:36	Buy	Limit	Day	Rejected	00	

1) Right click on the order status and select "Order log"

- Buy
- Sell
- Revise
- Cancel
- Market Depth
- Stock Info/Tracker
- Historical Data
- Intraday Chart
- Analysis Chart
- Order Log**
- Order Detail
- News

Order Log

JCY - 60AAA10704AAAABB

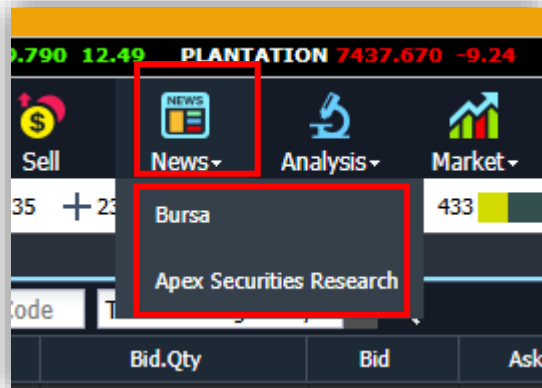
Time	Date	Price	O/S Qty	App ID	Counter Broker	Action by	ExchRefNo	Remark
10:39:38	26-03-2025	0.415	2,000				202503261618	Replace is accepted
10:39:38	26-03-2025	0.415	3,000 LP				202503261618	Replace Request qty from 3000 t...
10:18:01	26-03-2025	0.415	3,000				202503261618	Order In Market
10:18:01	26-03-2025	0.415	0 LP					New order has been submitted t...

Remarks will display record of all the orders you've place for a particular stocks.

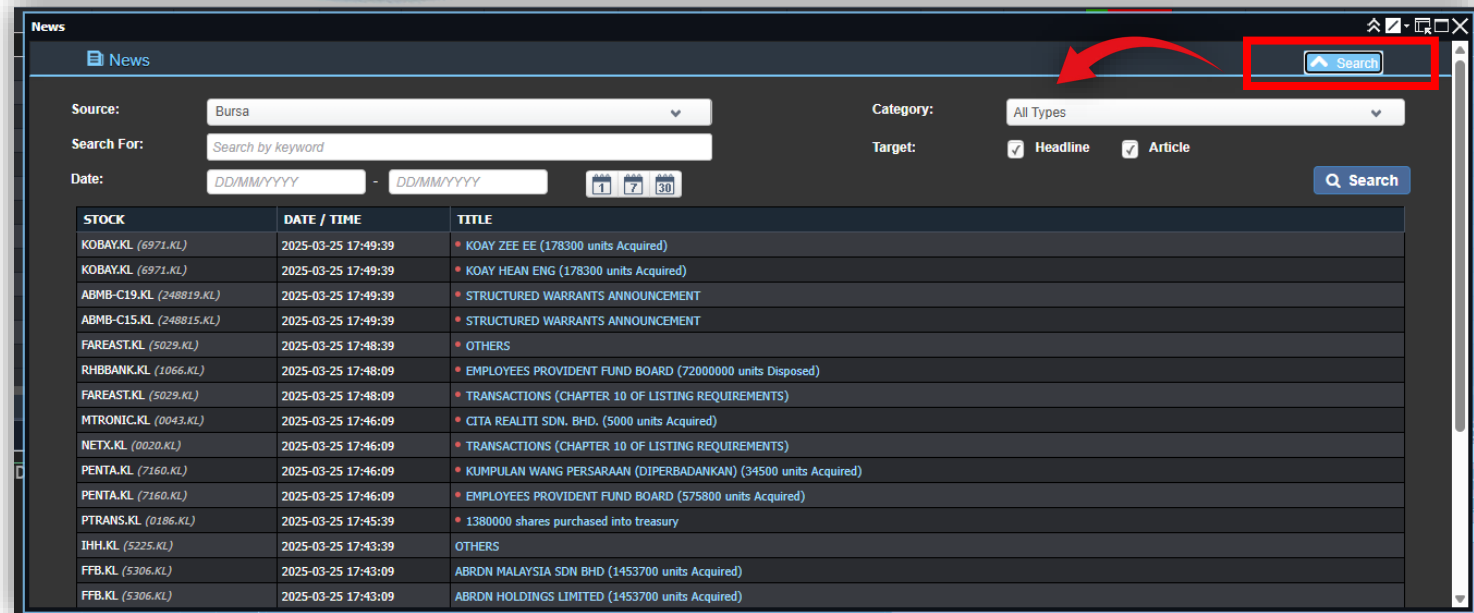




# NEWS



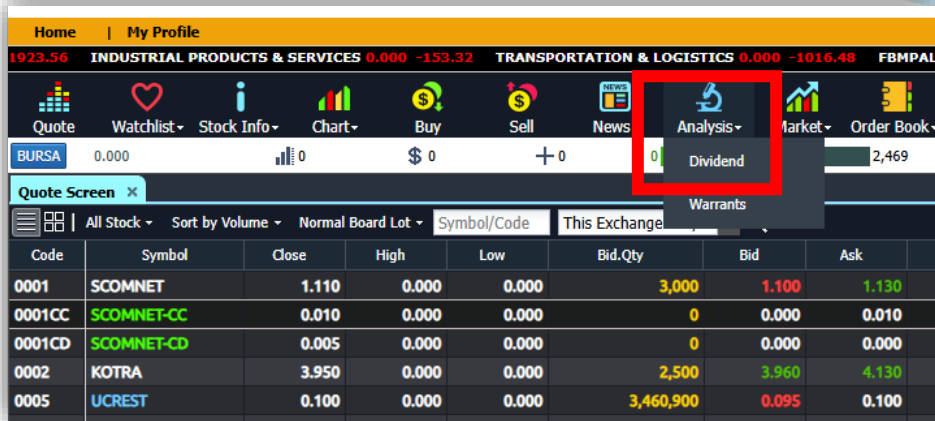
1) Click “News” icon and select “Bursa” or “Apex Securities Research”



2) Click the "Search" button to access the additional toggle, where you can select your preferred news.

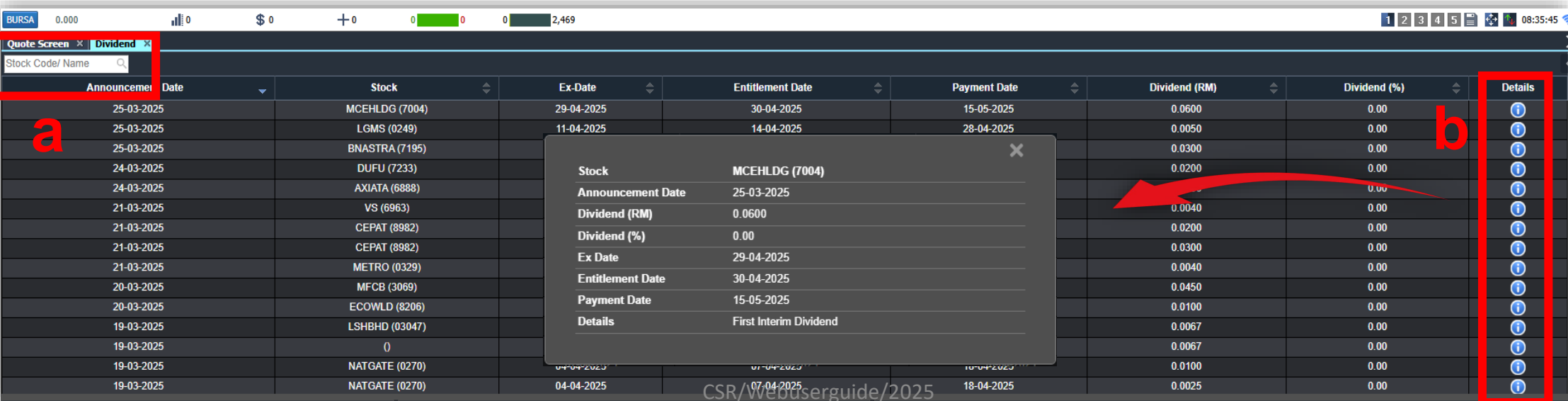


# DIVIDENDS INFO

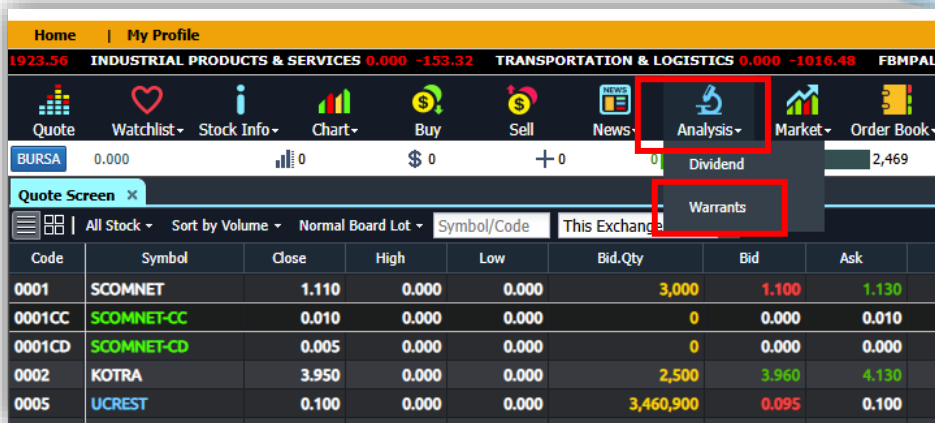


1) Click “Analysis” icon and select “Dividend”

- a) Use the search column to look for other stocks.
- b) Click the blue info icon to view the details.

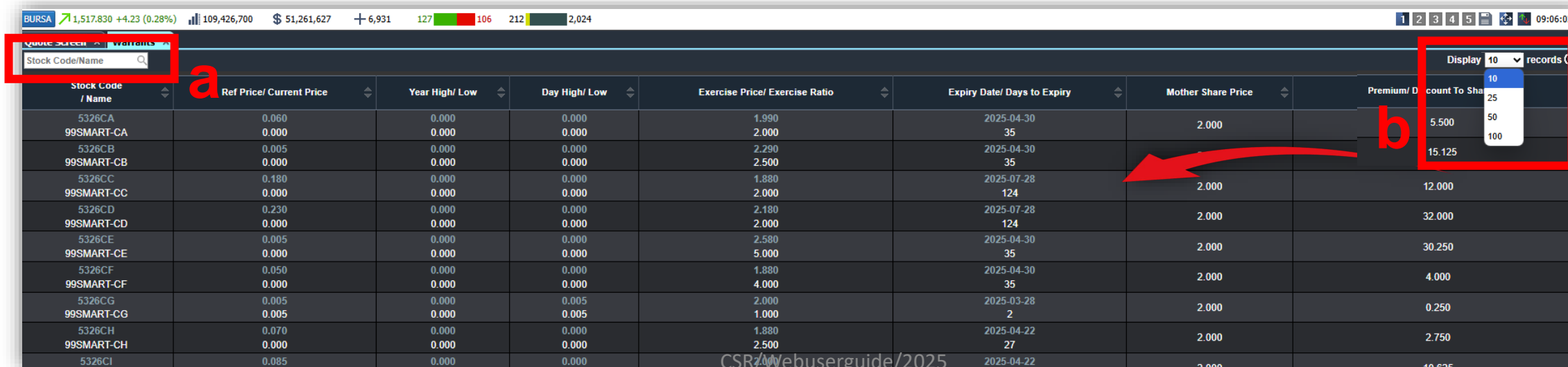


# WARRANTS INFO



1) Click “Analysis” icon and select “Warrants”

- a) Use the search column to look for other stocks.
- b) Click the drop-down arrow to view up to 100 records.



Stock Code / Name	Ref Price/ Current Price	Year High/ Low	Day High/ Low	Exercise Price/ Exercise Ratio	Expiry Date/ Days to Expiry	Mother Share Price	Premium/ Discount To Share
5326CA 99SMART-CA	0.060 0.000	0.000 0.000	0.000 0.000	1.990 2.000	2025-04-30 35	2.000	5.500
5326CB 99SMART-CB	0.005 0.000	0.000 0.000	0.000 0.000	2.290 2.500	2025-04-30 35	2.000	15.125
5326CC 99SMART-CC	0.180 0.000	0.000 0.000	0.000 0.000	1.880 2.000	2025-07-28 124	2.000	12.000
5326CD 99SMART-CD	0.230 0.000	0.000 0.000	0.000 0.000	2.180 2.000	2025-07-28 124	2.000	32.000
5326CE 99SMART-CE	0.005 0.000	0.000 0.000	0.000 0.000	2.580 5.000	2025-04-30 35	2.000	30.250
5326CF 99SMART-CF	0.050 0.000	0.000 0.000	0.000 0.000	1.880 4.000	2025-04-30 35	2.000	4.000
5326CG 99SMART-CG	0.005 0.005	0.000 0.000	0.005 0.005	2.000 1.000	2025-03-28 2	2.000	0.250
5326CH 99SMART-CH	0.070 0.000	0.000 0.000	0.000 0.000	1.880 2.500	2025-04-22 27	2.000	2.750
5326CI	0.085	0.000	0.000	2.500	2025-04-22	2.000	10.625

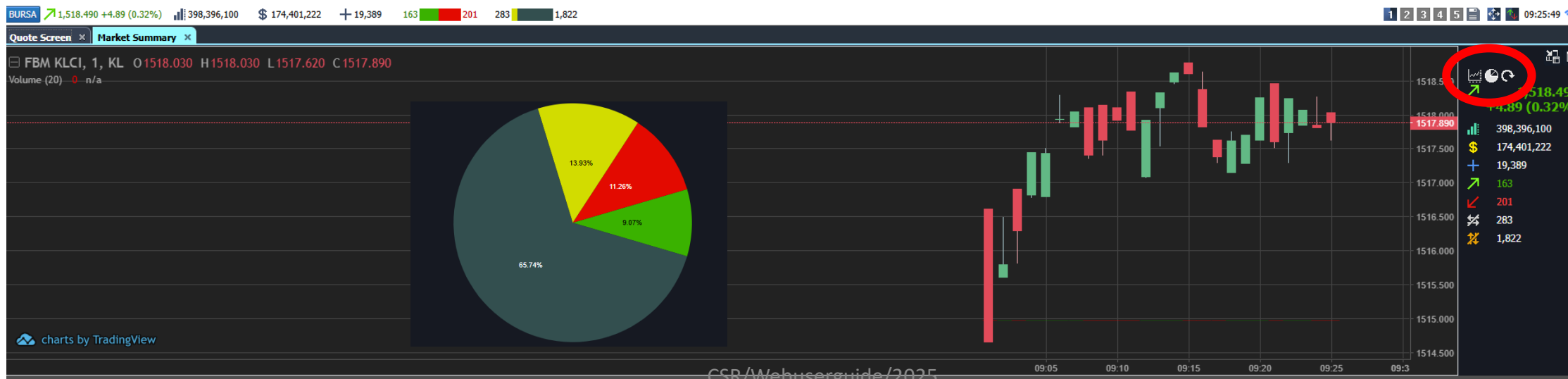


# MARKET SUMMARY

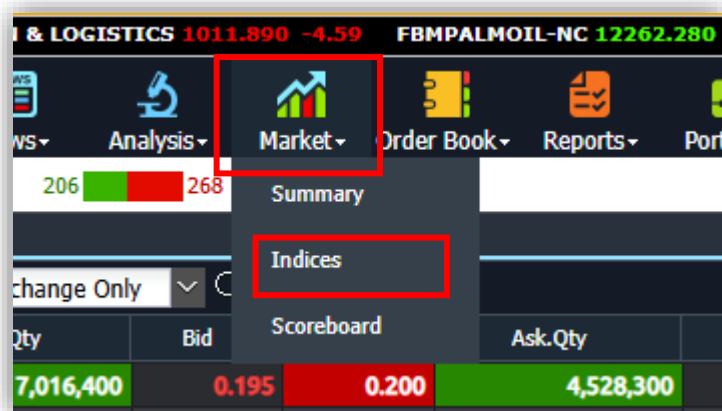


1) Click “Market” icon and select “Summary”

2) Choose Pie Chart View or Candle Stick View based on your preference.

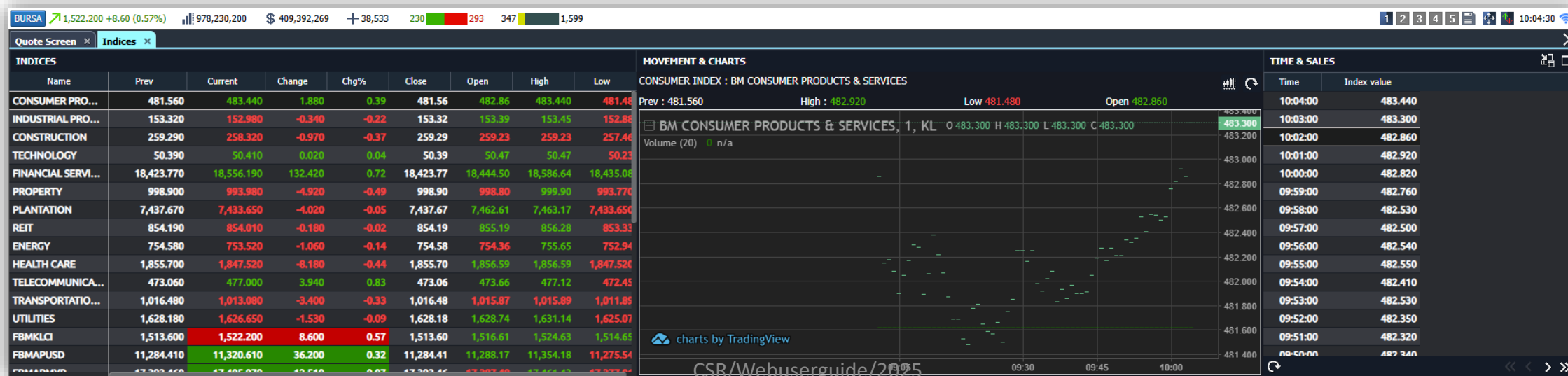


# INDICES

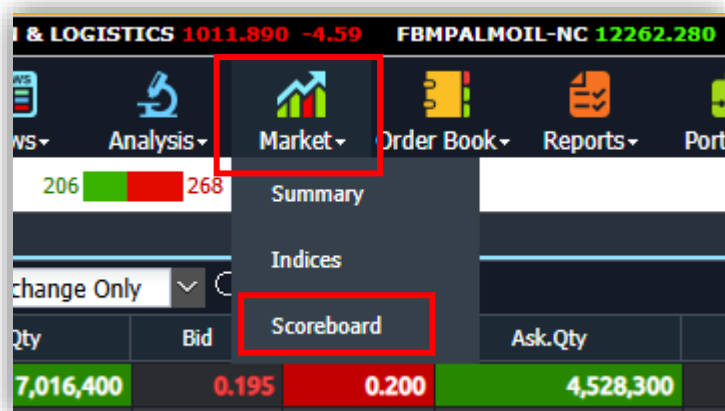


1) Click "Market" icon and select "Indices"

2) Choose Category View based on your preference.

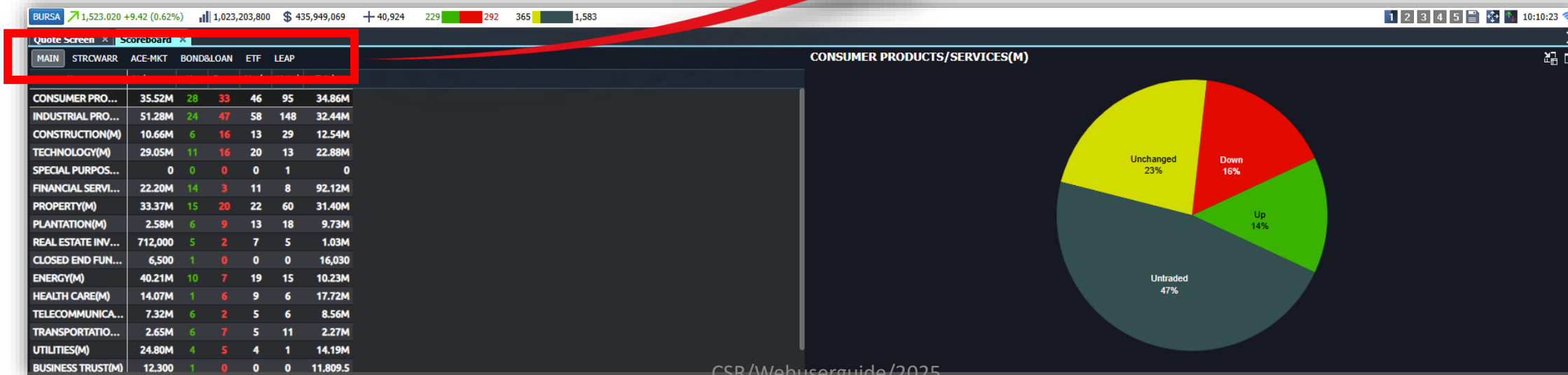


# SCOREBOARD

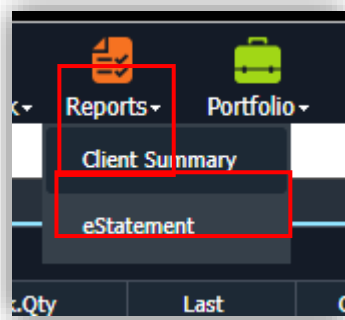


1) Click "Market" icon and select "Scoreboard"

2) Choose Category to view based on your preference.



# CLIENT SUMMARY



Click “Reports” icon and select “Client Summary”

**Summary of Client's Outstanding Position**

Client's Name : Y

Account Number : [ ] EN

Exchange : All

Currency : All

---

**[KL] Bursa Stock Exchange**

Account Summary	Due From You (MYR)	Due To You (MYR)
O/S Purchase Contract Due	-	-
O/S Purchase Contract Not Due	-	-
O/S Purchase Contract Overdue	-	-
O/S Contra Loss	-	-
O/S Debit Notes	-	-
O/S Interest Owing/ LPC	-	-
O/S Sales Contract	-	-
O/S Contra Profit	-	-
O/S Credit Notes	-	460.52
Trust Money	-	-
<b>Net Balance From / Due to You</b>	-	<b>460.52</b>

Contract Other Trust

**Important Notes:**

- \*\*The MYR equivalent for Non-MYR trades is an amount based on the exchange rate prevailing on the date of contract / deposition, which maybe different from the actual conversion rate applied on the date of withdrawal.
- Settlement transactions effected after 6 p.m. shall be for the next trading day's value date.
- Movement of fund and balance available in Apexetrade is not updated at real time.
- Please notify Dealer/Remisier once you have executed share pick up / set-off via the e-settlement.

**\*\* Client summary shows only current positions. For full transactions, please refer to the monthly statement.**



You may retrieve your statements at [www.apexsec.com.my](http://www.apexsec.com.my)

CSR/Webuserguide/2025



# E-STATEMENT

## eStatement

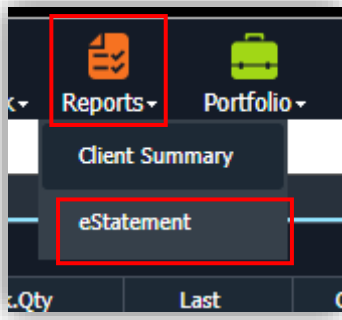
### AFMB eStatement

Account Number :

Date From :  Date To :

Report(s) :

- AFMB Invoice
- AFMB Customer Statement



Click “Reports” icon and select “eStatement”

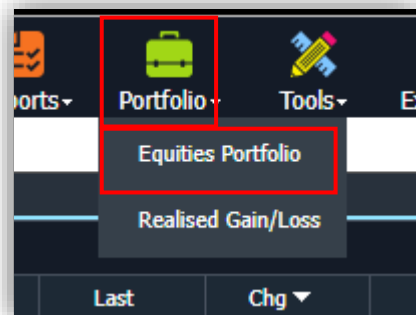


This only available for Astute Fund Management client.

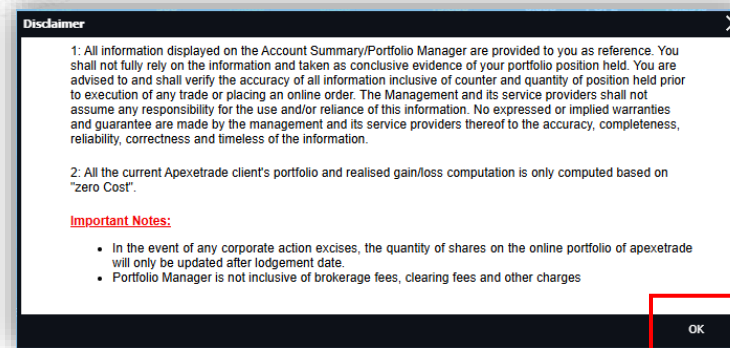




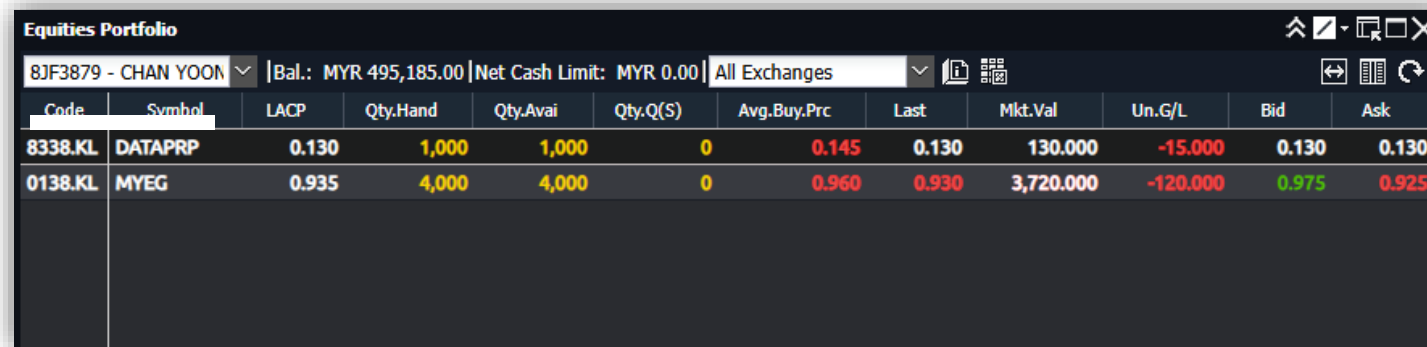
# EQUITIES PORTFOLIO



1) Click “Portfolio” icon and select “Equities Portfolio”



2) Click “OK” to accept the disclaimer



**Equities Portfolio**

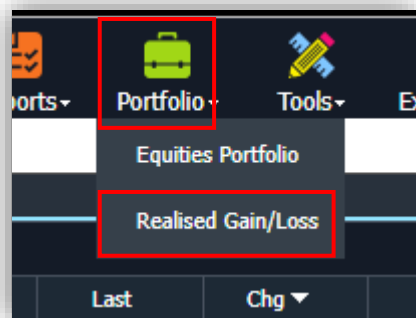
8JF3879 - CHAN YOON | Bal.: MYR 495,185.00 | Net Cash Limit: MYR 0.00 | All Exchanges

Code	Symbol	LACP	Qty.Hand	Qty.Avai	Qty.Q(S)	Avg.Buy.Prc	Last	Mkt.Val	Un.G/L	Bid	Ask
8338.KL	DATAPRP	0.130	1,000	1,000	0	0.145	0.130	130,000	-15,000	0.130	0.130
0138.KL	MYEG	0.935	4,000	4,000	0	0.960	0.930	3,720,000	-120,000	0.975	0.925

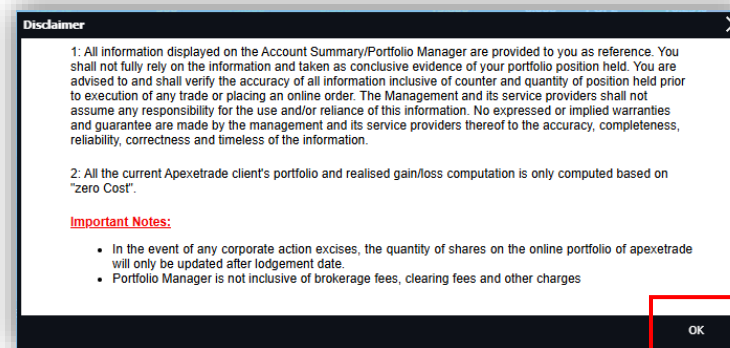
3) All your purchased stocks will be shown in the “Equities Portfolio”



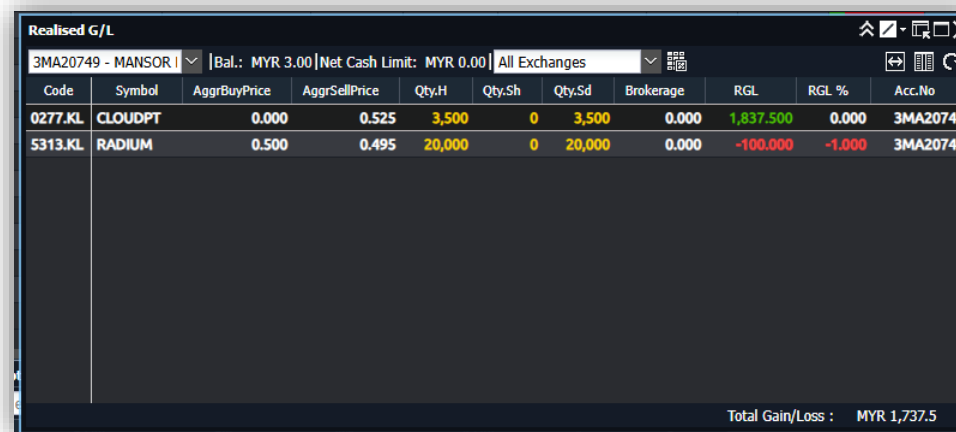
# REALISED GAIN/LOSS



1) Click “Reports” icon and select “Realised Gain/Loss”



2) Click “OK” to accept the disclaimer



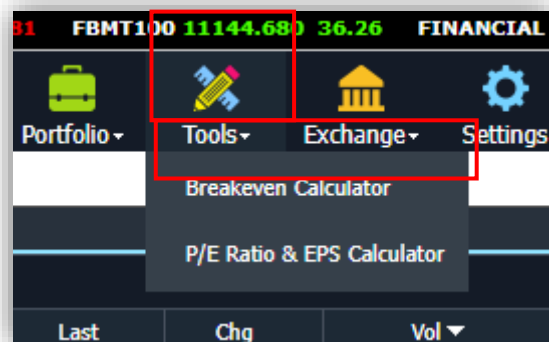
Code	Symbol	AggrBuyPrice	AggrSellPrice	Qty.H	Qty.Sh	Qty.Sd	Brokerage	RGL	RGL %	Acc.No
0277.KL	CLOUDPT	0.000	0.525	3,500	0	3,500	0.000	1,837.500	0.000	3MA20749
5313.KL	RADIUM	0.500	0.495	20,000	0	20,000	0.000	-100.000	-1.000	3MA20749

Total Gain/Loss : MYR 1,737.5

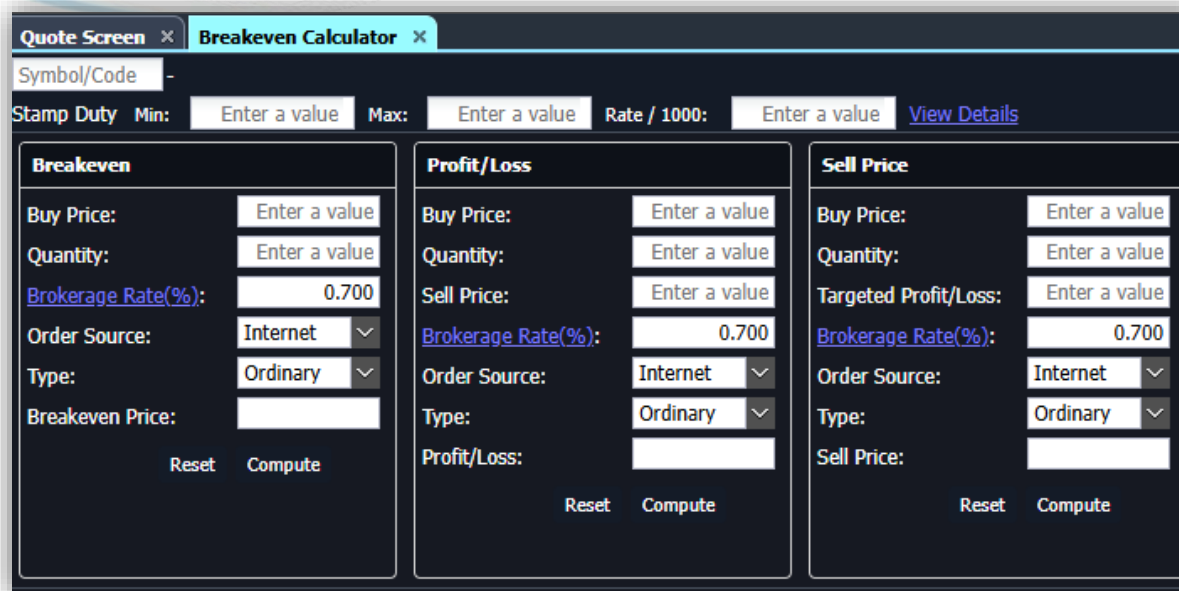
3) All your sold stocks will be shown in the “Realised gain/loss”



# BREAKEVEN CALCULATOR



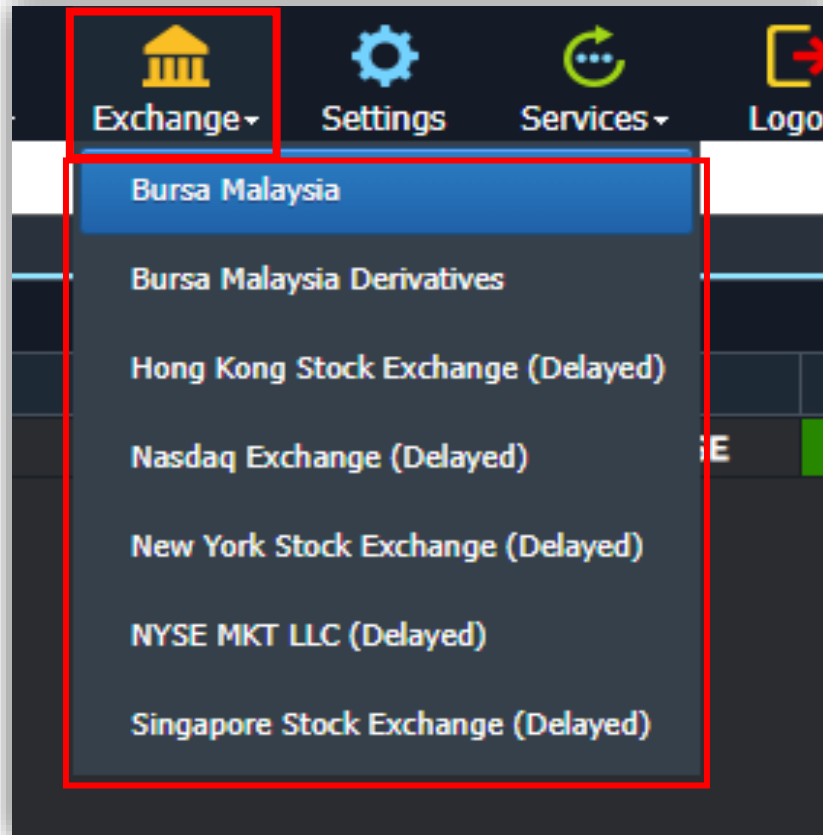
1) Click “Tools” icon and select “Breakeven Calculator”


Transaction Costs	
The calculator will be using the following rule to calculate transaction cost for both buy and sell trade:	
1. Brokerage Rate	
Standard Rate	0.70% - For transaction value at or below RM100,000 0.60% - For transaction value exceeding RM100,000 and at or below RM500,000 0.50% - For transaction value exceeding RM500,000
Special Rate	Brokerage Rate specified by user in the calculator. The effective rate that will be used for calculation will be the Brokerage Rate specified by user in the calculator which is not 0.70% A minimum fee of RM2 for bonds/loan stocks, RM12 for odd lot stocks and RM28 for normal stocks/warrants. 0.03% of transaction value with a maximum of RM1000.00 per contract
2. Clearing fee	
3. Stamp duty	
Category Rate	A (Shares or Stocks) - RM1.00 for every RM1,000 with maximum is RM1,000 B (Marketable Securities) - RM1.00 for every RM1,000 with maximum is RM200 C (ETF) - Exempted Stamp Duty until 31 Dec 2025 D (Default) - RM1.50 for RM1,000 or fractional part of transaction value.



# EXCHANGE

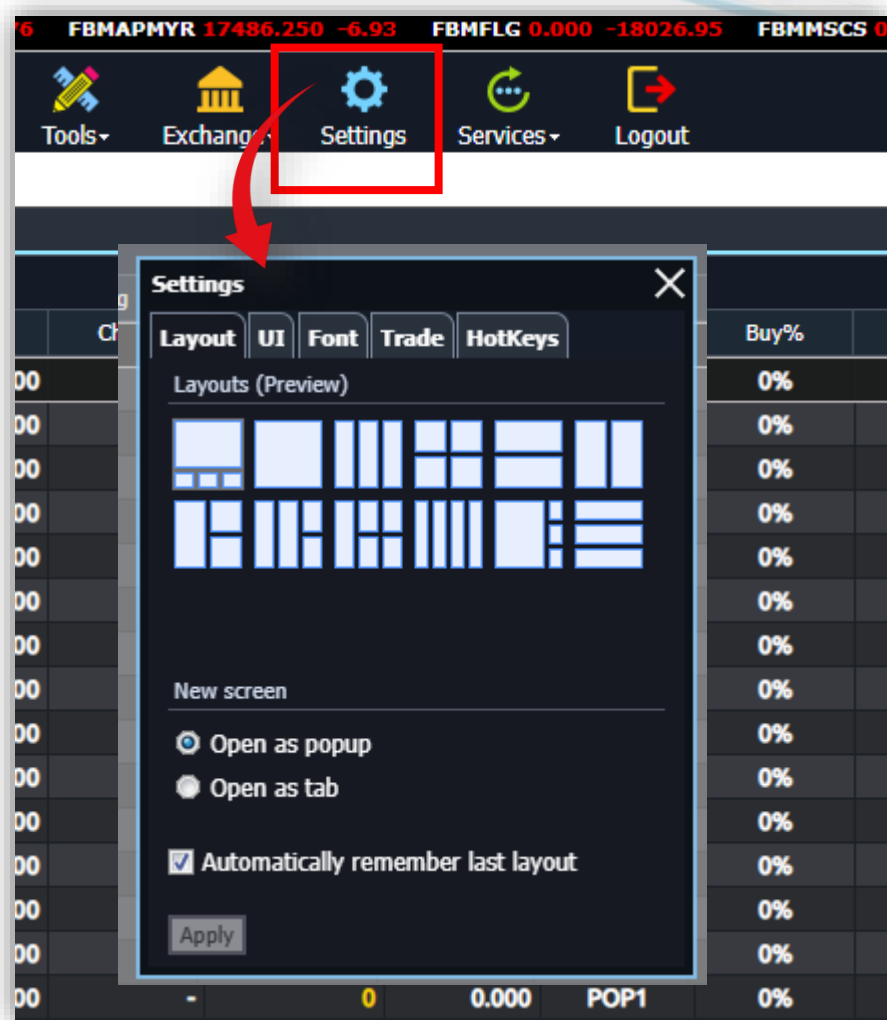


Click “Exchange” icon and select your preferred Market.



You can call us at 03-7890 8811 to check if you are allowed to trade foreign.

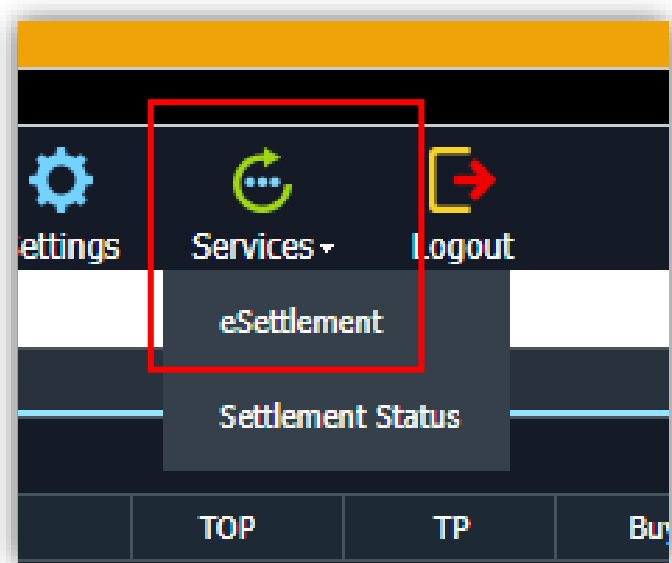
# SETTINGS



Customize the layout, interface, font, trading options, and hotkeys in settings.



# E-SETTLEMENT



Click on “Services” and select “e-Settlement”



E-settlement can only be processed if you have sufficient funds in your trading account. Otherwise, it will be a partial set-off, and you'll need to transfer the balance via online banking.



# E-SETTLEMENT

**Step 1: Select Outstanding Transaction(s)** Last Update 08/03/2023

Client's Name : \_\_\_\_\_  
 Account Number : \_\_\_\_\_ [View Client's Outstanding Position](#)

**Amount Available to Setoff Outstanding : RM 243,699.65** [How to use eSettlement? \(103KB\)](#)

Outstanding Items				Debit(RM)
Purchases	T2 (08/03/2023)	T1 (09/03/2023)		185,981.04
	185,981.04	0.00		
Net Contra Loss				0.00
Miscellaneous Debit				0.00
Debit Interest				0.00
Overdue Purchases				96,013.59
<b>Total Outstanding Amount</b>				<b>281,994.63</b>

**Please select outstanding transaction(s) for settlement.**

<input checked="" type="checkbox"/>	Date	Due Date	Ref No	Stock	Price	Purc Qty	O/S Qty	Interest	O/S Amt(RM)	Payable(RM)	
<input type="checkbox"/>	T2 <input type="checkbox"/> Click here to pay all T2										
<input checked="" type="checkbox"/>	06/03/2023	08/03/2023	<a href="#">B0072385-1</a>	MEITUAN-W	135.828600	7 X 100	7 X 100	0.00	52,329.66	52,329.66	
<input type="checkbox"/>	06/03/2023	08/03/2023	<a href="#">B0152452-1</a>	ISHARESHS-R	66.400000	1 X 100	1 X 100	0.00	4,343.79	4,343.79	
<input type="checkbox"/>	06/03/2023	08/03/2023	<a href="#">B0152456-1</a>	CSOP MSCI-R	12.540000	1 X 200	1 X 200	0.00	1,688.30	1,688.30	
<input type="checkbox"/>	06/03/2023	08/03/2023	<a href="#">B0238920-1</a>	ADV MICRO DEVICE	74.960000	10 X 1	10 X 1	0.00	3,502.52	3,502.52	
<input type="checkbox"/>	06/03/2023	08/03/2023	<a href="#">B0238922-1</a>	TELLURIN INC ORD	2.900000	10 X 1	10 X 1	0.00	417.81	417.81	
<input type="checkbox"/>	06/03/2023	08/03/2023	<a href="#">B0572343-1</a>	KUB	0.505000	100 X 100	100 X 100	0.00	5,067.52	5,067.52	
									<b>Pay</b>	52,329.66	

**Important Notes:**

- All settlement transactions effected after 6 p.m. shall be deemed as payment received on the next trading day.
- Movement of fund and balance available in Apexetrade is not updated at real time.
- Please notify Dealer/Remisier once you have executed share pick up / set-off via the e-settlement.

1) Check (v) on the box(es) to select preferred outstanding item(s) for settlement

2) Click "Pay"



# E-SETTLEMENT

**Step 2 - Select Payment Mode**

Name : clineB12262 Current Outstanding Amount : RM 281,994.63

Del	Trx Date	Due Date	Ref No	Stock	Price	Purc Qty	O/S Qty	Selected Amt	Interest	Amount
<input type="checkbox"/>	06/03/2023	08/03/2023	B0072385-1	MEITUAN-W	135.8286	7 X 100	7 X 100	52,329.66	0.00	52,329.66
Selected for Settlement								52,329.66	0.00	52,329.66

\* Add - Go to previous page to select additional transaction(s)  
\* Delete - Delete any selected transaction(s)

**Payment Mode**

Set Off (Contra Profit / Credit Journal / Dividend)							Total Amount Available to Setoff: RM 243,699.65	
<input type="checkbox"/>	Date	Ref No	Remark	Amount	Interest	Set Off Amount	Set Off Interest	
<input checked="" type="checkbox"/>	Click here for auto set-off							
<input checked="" type="checkbox"/>	30/12/2022	RT754191-1		(3,115.98)	(1.02)	(3,115.98)		(0)
<input checked="" type="checkbox"/>	10/01/2023	RT758658-1		(1,272.37)	(0.42)	(1,272.37)		(0)
Total Amount Selected for Set-off						(52,329.66)		(0)
Net Debit Interest to Settle						0		
Total amount selected for set off						(52,329.66)		
Excess After Set-off						(8,084.65)		(2.66)

**Outstanding amount**

<b>Amount Payable</b>	<b>0</b>
-----------------------	----------

For the outstanding amount, you can make an online payment to Apex Securities Berhad. Click [here](#) for more information.

1) Check (v) on the box(es) to select the available cash for set-off.

2) Click "Confirm"





# E-SETTLEMENT

**Step 3 - Submit Payment(s)**

Amt Payable via Internet Banking : RM 0.00

Method	Description	Branch	Amount
Setoff	Trust A/C		52,329.66
Online Transfer			0.00
			52,329.66

Back TRADING PIN:  Submit

1) Enter your 6 digits trading pin numbers and click "Submit"

**Step 4 - Payment Confirmation**

Your Payment submission is in progress. Your submission reference number is PN2023030800002.  
If approved, your payment will be reflected on the next trading day.  
You may check your payment status in [eSettlement Status](#) screen.

Payment Ref no. (Bill No.) : PN2023030800002  
Name : B12262  
Date / Time : 08/03/2023 Print

Method	Description	Branch	Amount
Setoff	Trust A/C		52,329.66
Online Transfer			0.00
			52,329.66

**Payment Details**

Trx Date	Due Date	Ref No	Stock	Price	Purc Qty	O/S Qty	Selected Amt	Interest	Amount
06/03/2023	08/03/2023	B0072385-1	MEITUAN-W	135.8286	7 X 100	7 X 100	52,329.66	0.00	52,329.66

2) Successfully submit payment.



# E-SETTLEMENT

**Step 3 - Submit Payment(s)**

Amt Payable via Internet Banking : RM 0.00

Method	Description	Branch	Amount
Setoff	Trust A/C		52,329.66
Online Transfer			0.00
			52,329.66

Back TRADING PIN:  Submit

1) Enter your 6 digits trading pin numbers and click "Submit"

**Step 4 - Payment Confirmation**

Your Payment submission is in progress. Your submission reference number is PN2023030800002.  
If approved, your payment will be reflected on the next trading day.  
You may check your payment status in [eSettlement Status](#) screen.

Payment Ref no. (Bill No.) : PN2023030800002  
Name : B12262  
Date / Time : 08/03/2023 Print

Method	Description	Branch	Amount
Setoff	Trust A/C		52,329.66
Online Transfer			0.00
			52,329.66

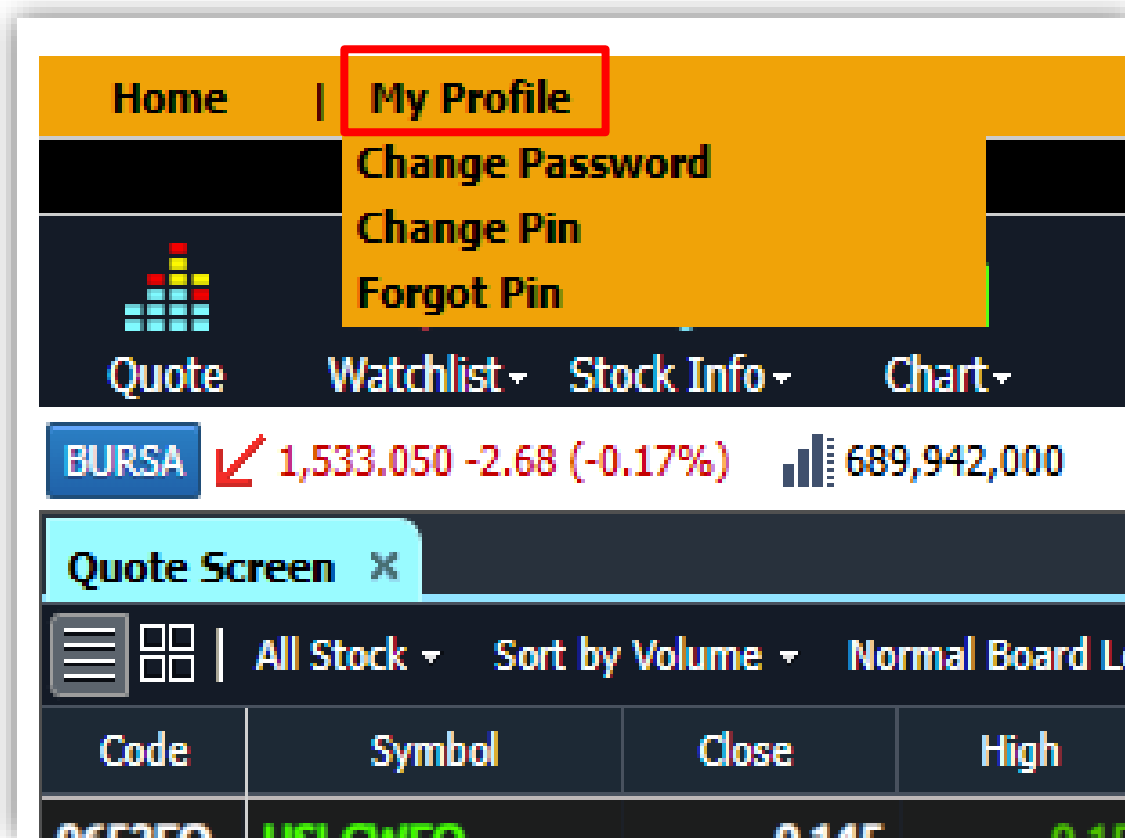
**Payment Details**

Trx Date	Due Date	Ref No	Stock	Price	Purc Qty	O/S Qty	Selected Amt	Interest	Amount
06/03/2023	08/03/2023	B0072385-1	MEITUAN-W	135.8286	7 X 100	7 X 100	52,329.66	0.00	52,329.66

2) Successfully submit payment.



# CHANGE PASSWORD



Click “My profile” and select “Change password”

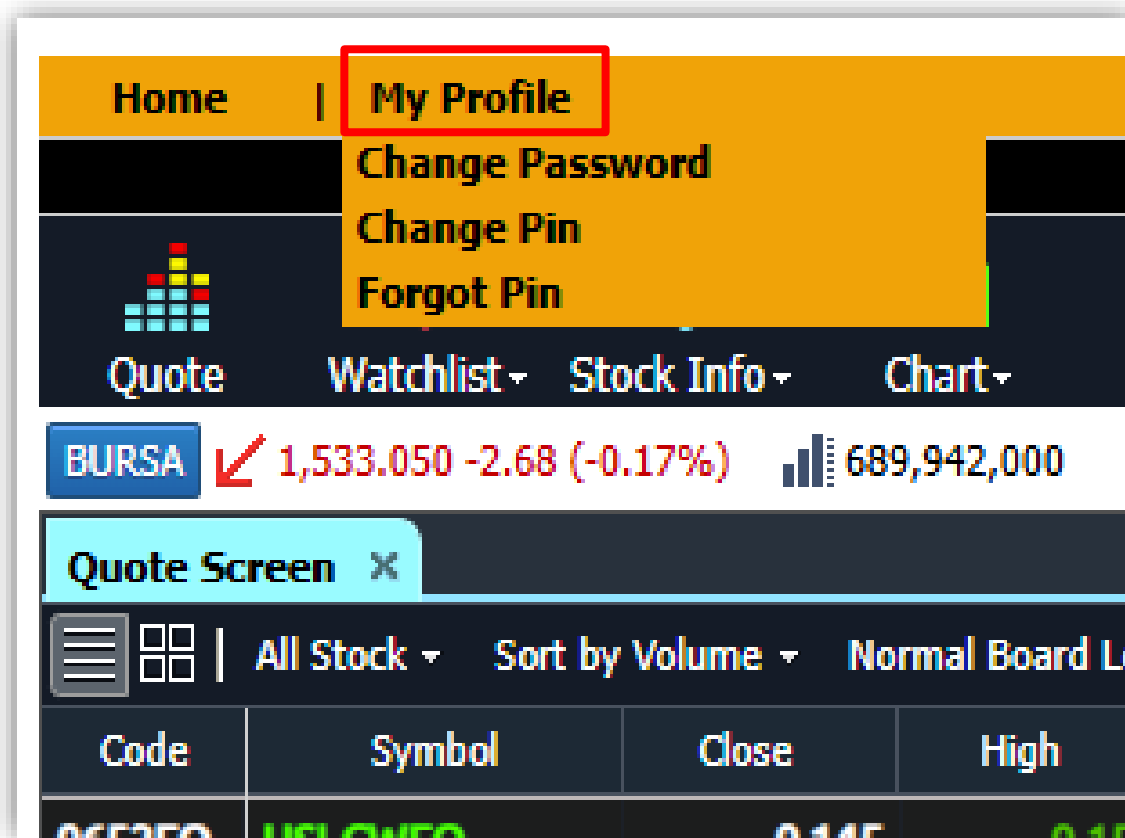


Should you forget your password, kindly contact us at 03-7890 8811 to reset.

**\*\*Recommended to change your password every 3 to 6 months for better security.**



# CHANGE PIN



Click “My profile” and select “Change pin”

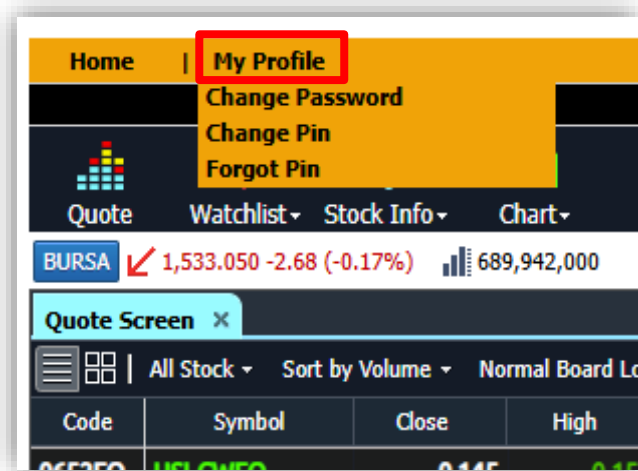


Should you forget your trading pin, kindly contact us at 03-7890 8811 to reset.

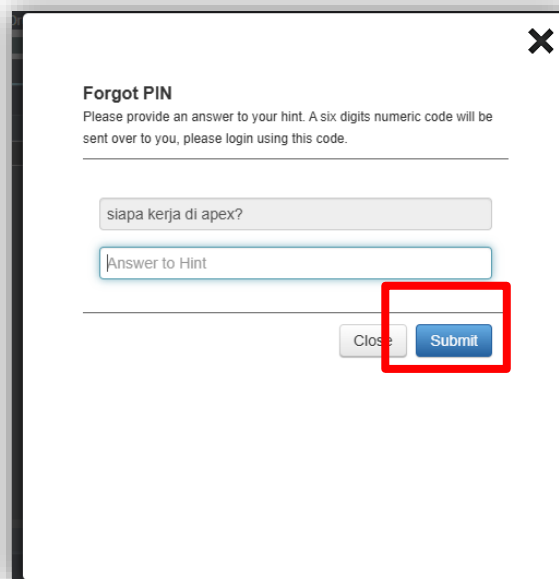
**\*\*Recommended to change your trading pin every 3 to 6 months for better security.**



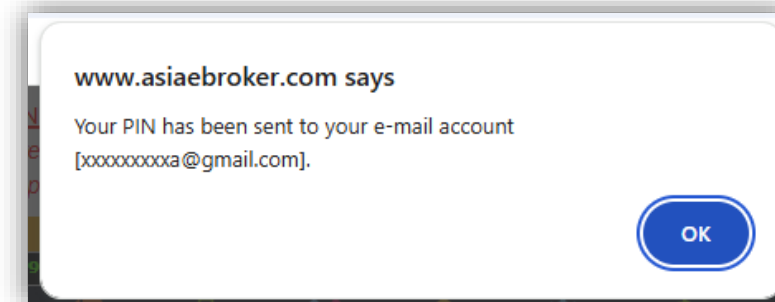
# FORGOT PIN



Click “My profile” and select “Forgot pin”



Answer to the Security question and click “Submit”



Temporary pin will be sent to your registered email.

